

Supported by



Meet in
Malaysia
BE Greater, Together.



APRU Global Health Conference 2025

Towards Planetary Health Equity: A Global Call for Shared Solutions

28th - 31st October 2025 | Universiti Malaya, Kuala Lumpur, Malaysia

Programme Book



APRU Global Health Conference 2025

Towards Planetary Health Equity: A Global Call for Shared Solutions

28th - 31st October 2025 | Universiti Malaya, Kuala Lumpur, Malaysia



Table of Contents

Foreword by the Minister of Health, Malaysia.....	1
Welcome Letter from the Vice-Chancellor of Universiti Malaya.....	2
Welcome Letter from Associate Deputy Vice-Chancellor (Academic & International), Universiti Malaya.....	3
Welcome Letter from Executive Director, Department of Research Development, Office of Deputy Vice-Chancellor (Research & Innovation), Universiti Malaya.....	4
Welcome Letter from Dean of Faculty of Medicine, Universiti Malaya.....	5
Welcome Letter from Chair of Local Organising Committee.....	6
Welcome Letter from Chief Executive, APRU.....	7
Welcome Letter from Global Health Program Director, APRU.....	8
Message from Conference Keynote Speaker.....	9
Funders and Sponsors.....	10
About APRU.....	11
APRU Global Health Program Advisory Group.....	12
APRU Global Health Program Working Group Leaders.....	18
APRU Members.....	24
International Organising Committee.....	25
Local Organising Committee.....	26
Conference Agenda.....	31
Speakers and Moderators.....	34



Pre-conference Workshop 1.....	46
Pre-conference Workshop 2.....	52
Conference Working Group Sessions.....	55
Student-led Forum -Youth Power in Planetary Health.....	58
APRU Global Health Faculty Ambassadors 2024-2025.....	59
APRU Student Ambassadors 2025.....	60
Finalists of the Student Poster Contest.....	61
Finalists of the APRU Global Health Virtual Case Competition.....	62
About the Conference.....	63
Conference Venue.....	64
Oral Presentation Schedule.....	66
e-Poster Presentation Schedule.....	75
APRU GHC 2026 Host Announcement.....	82



Minister of Health, Malaysia

Foreword

It is an honour to welcome all delegates to the APRU Global Health Conference 2025, co-hosted by the Department of Social and Preventive Medicine, Faculty of Medicine, Universiti Malaya, together with the Association of Pacific Rim Universities (APRU). On behalf of the Government of Malaysia, I extend warm greetings to our distinguished guests, partners, and friends from across the Pacific Rim and beyond.

This year's theme, "Towards Planetary Health Equity: A Global Call for Shared Solutions," reminds us that the wellbeing of people and the wellbeing of the planet are inseparable.

It calls on all of us, the governments, academia, and communities alike, to act with shared purpose and fairness in addressing the health challenges of our time.

Around the world, the realities of climate change, environmental degradation, and widening social gaps have deepened health inequities. Our response must therefore go beyond healthcare delivery to include the protection of ecosystems, the design of resilient systems, and the pursuit of justice for those most vulnerable to the changing environment.

Malaysia is committed to building a health system that is preventive, equitable, and sustainable. This includes greening our healthcare facilities, strengthening preparedness for climate-related health risks, and ensuring that essential services reach those who need them most, including rural communities, indigenous peoples, informal workers, and the urban poor. Health equity, after all, is the foundation of planetary wellbeing.

We also recognise that the next generation of health professionals will shape this future. By embedding sustainability, digital innovation, and interdisciplinary practice into medical education and training, we are preparing our young leaders to care for both people and the planet.

This conference embodies the collaboration the world needs. It gathers experts, policymakers, and students across disciplines to exchange knowledge, spark innovation, and co-create solutions for a healthier, fairer world. I am confident that the ideas shared here will inspire partnerships that continue long after this gathering ends.

On behalf of the Ministry of Health, Malaysia, I express sincere appreciation to Universiti Malaya, APRU, and all partners for your leadership and dedication in bringing this conference to fruition. May your deliberations be insightful, your connections enduring, and your collective vision a beacon for planetary health equity.

DATUK SERI DR DZULKEFLY AHMAD
MINISTER OF HEALTH





Vice-Chancellor of Universiti Malaya

Welcome letter

It is with great pride and honour that Universiti Malaya welcomes distinguished guests, researchers, and thought leaders from around the world to the APRU Global Health Conference 2025. This year's conference, co-hosted by the Department of Social and Preventive Medicine, Faculty of Medicine, Universiti Malaya, and the Association of Pacific Rim Universities (APRU), stands as a beacon of collaboration and a manifestation of shared purpose in advancing the global health agenda.



The theme, "Towards Planetary Health Equity: A Global Call for Shared Solutions," could not be more timely or urgent.

As the world navigates complex intersections of climate change, health inequities, and social transformation, we are reminded that our collective well-being depends on a deeper understanding of the unity between human, environmental, and planetary health. These challenges transcend borders, and so must our solutions.

At Universiti Malaya, we believe that universities bear a moral and intellectual responsibility to lead the search for knowledge that uplifts humanity. This conference reflects that calling, to advance research with conscience, innovation with empathy, and collaboration with purpose. It is through partnerships like those fostered under APRU that we can catalyse lasting change, drive inclusive policy, and nurture resilience in the face of global health and environmental crises.

Our journey towards planetary health equity demands interdisciplinary vision, scientific rigour, and the courage to act beyond conventional boundaries. It requires a renewed commitment to fairness in access to health, resources, and opportunities, and to ensure that the future of our planet is shaped by shared responsibility and ethical stewardship.

As host, Universiti Malaya reaffirms its dedication to the pursuit of impactful research and global cooperation in service of humanity. We are deeply grateful to APRU and all participating institutions for their continued trust and engagement. Together, let us imagine, innovate, and implement solutions that will define a more prosperous, more equitable, and sustainable future for all, for a better tomorrow.

Professor Dato' Seri Ir Dr Noor Azuan Abu Osman
Vice-Chancellor
Universiti Malaya



**Associate Deputy Vice-Chancellor (Academic & International),
Universiti Malaya**

Welcome letter

I am delighted to welcome everyone to Universiti Malaya International Week 2025, a vibrant celebration of global collaboration, cultural diversity, and academic excellence, held in conjunction with Malaysia's ASEAN Chairmanship 2025. This milestone event brings together scholars, partners, and communities from across the globe in the spirit of connection, innovation, and shared progress.

As one of the Universiti Malaya International Week's major highlights, Universiti Malaya is honoured to host the Association of Pacific Rim Universities (APRU) Global Health Conference 2025, themed "Towards Planetary Health Equity: A Global Call for Shared Solutions."



The conference features dynamic pre-conference workshops on Preparing Health Systems for the Future of AI and Implementation Science, underscoring our commitment to translating knowledge into action.

With three key thematic tracks on Planetary Health Equity, Global Health Systems, and the Global Burden of Disease, this conference will explore pressing global challenges through over 200 abstract presentations, a virtual case competition, and a student poster contest that showcase the creativity and insight of emerging scholars.

Complementing these academic pursuits, a Tree Planting Initiative with the Forest Research Institute Malaysia (FRIM), featuring 120 native trees to mark Universiti Malaya's 120 years of excellence stands as a living testament to our enduring commitment to sustainability and a greener future.

Adding a cultural crescendo to the week, the APRU Orchestra makes its official debut at Universiti Malaya under the theme "A Symphony of Cultures - East Meets West." This cross-cultural repertoire brings together Asia-Pacific traditions and Western classical music, celebrating harmony through diversity. From gamelan to Beethoven, P. Ramlee to Teresa Teng, each performance invites audiences to discover familiar favourites and hidden cultural treasures, reimagined with creativity and innovation.

Together, these moments reflect Universiti Malaya's unwavering spirit of internationalisation, inclusivity, and sustainability as we continue our journey of learning, discovery, and friendship beyond borders. I would like to extend my heartfelt thanks to the APRU Secretariat, APRU Global Health Conference 2025 Organizing Team, APRU Orchestra for their outstanding efforts in organizing such an inspiring and impactful program.

Wishing everyone a truly fruitful and inspiring conference. May this week spark new ideas, forge lasting connections, and reaffirm our shared commitment to a healthier, more equitable world.

Professor Dr Yvonne Lim Ai Lian

Associate Deputy Vice Chancellor (Academic & International), Universiti Malaya
Office of the Associate Deputy Vice-Chancellor (Academic & International)



**Executive Director, Department of Research Development,
Office of Deputy Vice-Chancellor (Research and Innovation),
Universiti Malaya**

Welcome letter

It is my great pleasure to welcome you to the 18th APRU Global Health Conference 2025, held at Universiti Malaya, Malaysia. This year's theme, "Towards Planetary Health Equity: A Global Call for Shared Solutions," captures the spirit of our collective mission.

As the world continues to face complex health challenges driven by climate change, environmental degradation, and widening inequalities, this conference brings together leading scholars, policymakers, and practitioners from economies across the Pacific Rim and beyond to exchange ideas, build partnerships, and inspire meaningful change.

In keeping with APRU's long tradition of fostering academic excellence and global engagement, this meeting will serve as a hub for transformative dialogue. From discussions on climate-resilient health systems and the One Health approach to sessions on technological innovation and governance reform, we are reminded that achieving planetary health equity demands integrated, cross-sectoral solutions rooted in compassion and evidence.

This conference aligns well with Malaysia's role in ASEAN, reinforcing regional cooperation and sustainable development to advance the health of people and the planet across Southeast Asia and beyond. In addition, Universiti Malaya's commitment to excellence in thought leadership, rigorous science, accessible knowledge, and impactful policy-translating research provide a strong institutional backbone for this event. This alignment ensures that insights generated here may be translated into regional actions that strengthen collective resilience and equitable health outcomes.

I wish you an enriching and inspiring conference experience in Kuala Lumpur. Welcome to the APRU Global Health Conference 2025, and to a shared journey towards planetary health equity.

Professor Dr Sanjay Rampal A/L Lekhraj Rampal

Executive Director, Department of Research Development,
Office of Deputy Vice-Chancellor (Research and Innovation), Universiti Malaya.
Professor of Epidemiology and Public Health, Department of Social and Preventive Medicine,
Faculty of Medicine, Universiti Malaya.





Dean, Faculty of Medicine, Universiti Malaya

Welcome letter

It gives me great pride and pleasure to welcome distinguished delegates to the Association of Pacific Rim Universities (APRU) Global Health Conference 2025, hosted by the Department of Social and Preventive Medicine at the Faculty of Medicine, Universiti Malaya.

This year's theme, "Towards Planetary Health Equity: A Global Call for Shared Solutions," is both timely and urgent, reflecting the profound interdependence between human well-being, environmental sustainability, and social justice.

As the world faces challenges of climate change, environmental degradation, and widening health disparities, it is clear that the health of our planet and the health of its people are inseparable.

The Faculty of Medicine stands firmly committed to advancing the discourse and practice of sustainability in health; one that embraces inclusivity, resilience, and shared responsibility across borders.

This conference offers a vital platform for exchanging transformative ideas, strengthening partnerships, and co-creating pathways that prioritise equity and sustainability at the heart of global health systems. The solutions we seek must transcend disciplines, sectors, and geographies; uniting us in our shared duty to safeguard both human and planetary well-being.

Universiti Malaya is deeply honoured to contribute to and advance this collective pursuit of knowledge and integrated responses that will shape a more resilient and inclusive future. Let us use this gathering not only to deepen understanding but to spark meaningful actions that resonate beyond the conference halls, shaping policies, practices, and mindsets for generations to come.

I extend my heartfelt appreciation to the organising committee, participants and collaborators for your commitment to a healthier, equitable, and sustainable world. Together, let us forge the shared solutions our planet so urgently needs.

Professor Dato' Dr Yang Faridah Abdul Aziz
Dean, Faculty of Medicine, Universiti Malaya





Chair, APRU Global Health Conference 2025

Welcome letter

It is my great pleasure to welcome you to the 18th APRU Global Health Conference 2025, hosted by Universiti Malaya in collaboration with the Association of Pacific Rim Universities (APRU). This year's theme, "Towards Planetary Health Equity: A Global Call for Shared Solutions," highlights our shared responsibility to address the intertwined challenges of health, climate change, and social justice.

This is the second time Universiti Malaya has had the honour of hosting this prestigious conference. In 2018, we convened under the theme "Planetary Health: The Next Frontier."

That event sparked vibrant discussions on climate change, human rights, mental health, and the future of global health in the context of the Fourth Industrial Revolution. Seven years later, we return with a renewed focus on equity, ensuring that the benefits of planetary health reach all communities.

Malaysia has made important strides in this area. Through the National Planetary Health Action Plan, developed by the Academy of Sciences Malaysia with contributions from Universiti Malaya faculty, we are advancing policies that integrate health, environment, and sustainable development. This commitment reflects our belief that planetary health is not only a research agenda but also a national priority.

To embody these principles, this conference includes a tree-planting initiative in partnership with the Forest Research Institute Malaysia (FRIM). Planting 120 native trees, carefully selected for ecological value, is a tangible step towards reducing our carbon footprint and leaving a living legacy for future generations.

We invite each of us to be co-stewards of the earth, to plant your own tree at home, in your community, or through local reforestation projects, and not just be passive attendees, but active custodians of planetary health.

#APRUGHC2025GreenLegacy, #APRUGHC2025PlantATree,
#APRUGHC2025CarbonSmartConference

I am especially encouraged by the strong participation of students and young researchers. Your ideas and energy are essential for driving solutions forward. On behalf of the Organising Committee, I thank all partners and participants for your contributions. May this conference inspire collaboration, innovation, and action towards a healthier and more equitable planet.

Selamat datang, and I wish you a fruitful and inspiring conference.

Professor Dr Victor C.W. Hoe

Chair, APRU Global Health Conference 2025
Head, Department of Social & Preventive Medicine
Faculty of Medicine, Universiti Malaya





Chief Executive, Association of Pacific Rim Universities (APRU)

Welcome letter

On behalf of APRU, I warmly welcome you to the 18th APRU Global Health Conference 2025, hosted by Universiti Malaya in Kuala Lumpur, Malaysia.

APRU is a network of 62 leading research universities across Asia, the Americas, and Australasia. We are united by a shared commitment to addressing the region's most pressing challenges through collaborative research, education, and innovation.

The APRU Global Health Program is one of our most impactful and long-standing initiatives. It brings together experts from diverse disciplines to bridge health divides, improve population health, and tackle shared challenges across the Asia-Pacific.

This year's conference theme, "Towards Planetary Health Equity: A Global Call for Shared Solutions," emphasises the urgent need for inclusive and integrated approaches to the complex links between human health, environmental sustainability, and social justice. It reflects our belief that human well-being is deeply connected to the health of our planet.

As the leading network of Asia-Pacific research universities, APRU recognises the unique opportunity this conference presents to foster meaningful dialogue and cross-sector collaboration. We are proud to convene scholars, policymakers, industry leaders, and civil society to facilitate the co-creation of innovative solutions.

To address the growing relevance of artificial intelligence in healthcare, this year's program features a dedicated workshop on its ethical application. The session will explore responsible data governance, inclusive system design, and regionally appropriate policy frameworks. We thank data.org for their generous support through our collaboration on AI and Data Science for Social Impact.

We are profoundly grateful to the Universiti Malaya Vice-Chancellor, Professor Dato' Seri Ir. Dr. Noor Azuan Bin Abu Osman and especially the organising team at the Department of Social and Preventive Medicine, Faculty of Medicine, for their commitment and hard work in hosting this annual conference.

We also thank APRU's Global Health Program Director, Professor Mellissa Withers, for her leadership, and the Advisory Group for their consultation and support over the past years. I wish you a very productive and successful conference.

Professor Thomas Schneider
Chief Executive, APRU





Director, APRU Global Health Program

Welcome letter

Dear Colleagues and Friends,

It is my pleasure to welcome you to the 18th APRU Global Health Conference. As Director of the APRU Global Health Program, I would like to express my gratitude to everyone who traveled to be here.

This year's theme is Towards Planetary Health Equity: A Global Call for Shared Solutions. Our goal over the next three days is to bring together academic leaders, researchers, students, community partners, and policymakers to co-create innovative and inclusive strategies that address the inter-related challenges of health equity, environmental sustainability, and global wellbeing.



This conference provides a platform for meaningful dialogue across disciplines and economies on many important issues facing our global population, including planetary health, mental health, non-communicable and communicable diseases, health systems, nutrition, migration, humanitarian assistance, and many more. The conference also infuses a lens of technology, ethics, and human rights into these issues. Beyond the formal sessions, you'll have numerous opportunities to interact in our working group sessions, explore student contributions in the form of case competition videos and student posters from around the region, and engage with current and future leading thinkers working towards transformative solutions.

As stated in the theme, we need to work together to develop shared solutions. Over the next few days, global health experts from many economies, disciplines and backgrounds will convene to exchange ideas, inspire action, and translate research into policy and action. We look forward to collectively advancing planetary health equity so that together we can create shared solutions for a more resilient and just world.

I would like to express my appreciation to the entire team at the Department of Social and Preventive Medicine at the Faculty of Medicine, Universiti Malaya for their tremendous efforts in putting together this conference. I would also like to express my gratitude to the APRU Secretariat, members of our Advisory Board, and the Working Group Chairs for their continued service to the APRU Global Health Program.

Thank you once again and I wish you an enjoyable and rewarding time here in Kuala Lumpur.

Best wishes,

Mellissa Withers, PhD, MHS

Director, APRU Global Health Program



Conference Keynote Speaker

Message

Human health and planetary well-being are inseparable. As environmental pressures intensify, they converge with public health challenges to strain food systems, water resources, energy security, and social resilience. Nowhere is this convergence more visible than in the Asia Pacific, where rapid development and urbanisation bring prosperity but also magnify the risks of climate disruption, pollution, and emerging disease burdens.

The theme of this year's APRU Global Health Conference, "Towards Planetary Health Equity: A Global Call for Shared Solutions", captures both the urgency and the opportunity of our time.

Planetary health is not a new science, but a reframing of connections between human, animal, and environmental health into a shared agenda for action. We are living in a defining moment. Climate disruption, biodiversity loss, and the pollution of air, water, and soil are increasingly rendering our environment hostile, with profound consequences for human health.

Vulnerable populations often face the greatest risks, with fewer resources and limited resilience to adapt to change. Too often, societies have normalised profit over purpose, resource over-exploitation, and short-term gains over long-term resilience. These behaviours must be denormalised and replaced with values that champion stewardship, fairness, and collective responsibility for future generations. Achieving equity demands solutions that are innovative, evidence-based, inclusive, and just.

This conference provides a vital platform for scholars, policymakers, and practitioners across the Pacific Rim to exchange knowledge, challenge assumptions, and forge collaborations. By bringing together diverse perspectives, we can chart integrated strategies that restore ecosystems, strengthen health systems, reduce inequalities, and build resilience. Progress will also depend on embedding science, technology, and good governance into collective action, ensuring solutions are both sustainable and equitable.

As we gather in Kuala Lumpur, let us be guided by timeless Native American wisdom: we do not inherit the Earth from our ancestors, we borrow it from our children. May this conference inspire solutions worthy of that responsibility.

Academician Professor Emerita Datuk Dr Asma Ismail FASc
Chairperson, National Planetary Health Action Plan



APRU Global Health Conference 2025

Towards Planetary Health Equity: A Global Call for Shared Solutions



Funders and Sponsors

Supported by



Sponsors



About Data.org

data.org is accelerating the power of data and AI to solve some of the world’s biggest problems. By hosting innovation challenges to surface and scale groundbreaking ideas, and elevating use cases of the most effective tools and strategies, we are building the field of data for social impact.

By 2032, data.org will train one million purpose-driven data practitioners, ensuring there is capacity to drive meaningful, equitable impact.

About Malaysian AIDS Foundation (MAF)



The Malaysian AIDS Foundation (MAF) was formed in 1993 and fully incorporated in 2003 under the Trustees Incorporation Act (1952) to carry out the following objectives: Prevent the spread of HIV in Malaysia; Provide education on matters pertaining to HIV/AIDS to the family and friends of people living with HIV, the general public and the authorities at the national and local level in Malaysia; Render support to People Living with HIV; Protect the human rights of people in Malaysia who may suffer discrimination due to their HIV status; and Provide financial assistance or such other form of support to bodies, organisations and institutions, including the Malaysian AIDS Council, in carrying out the activities and services described.

APRU Global Health Conference 2025

Towards Planetary Health Equity: A Global Call for Shared Solutions



About APRU

The Association of Pacific Rim Universities (APRU) is a network of leading research universities across the Americas, Asia, and Australasia. Established in 1997 in California, USA, APRU was founded to harness the collective strengths of top institutions in addressing global challenges and shaping public policy.

Today, APRU connects over 60 member universities from 18 economies. Its core programs focus on critical areas such as global health, multi-hazards, artificial intelligence, women in leadership, sustainable cities, and indigenous knowledge systems.

Since 2007, the APRU Global Health Program has worked to strengthen research and education collaborations among Pacific Rim universities to address both regional and global health challenges. By fostering cross-border partnerships and enhancing dialogue, the program serves as a vital platform for member universities to bridge health disparities, promote population health, and respond to shared health threats.

Through this network, members leverage cutting-edge research, education and training programs, and evidence-based interventions to tackle pressing issues such as demographic shifts, health inequities, the rise of non-communicable diseases, mental health concerns, and infectious disease outbreaks.

The program has also expanded to include innovative approaches to global health education and applied research. These include Research Working Groups and student-focused initiatives such as shared virtual courses, student competitions, and experiential learning opportunities.

The APRU Global Health Program is hosted by the Institute on Inequalities in Global Health at the University of Southern California, and is led by Professor Mellissa Withers.

For more information about APRU and its Global Health Program, please visit the official page:

APRU: <https://apru.org/>

APRU Global Health Program: <https://www.apru.org/our-work/pacific-rim-challenges/global-health/>



APRU Global Health Program Advisory Group



Mellissa Withers (Director), University of Southern California

Mellissa Withers is the director of the APRU Global Health Program. She is a Professor at the University of Southern California Keck School of Medicine in the Department of Population and Public Health Sciences, where she is also Director of Pedagogical Enrichment and Training. Her research is informed by her international experiences and commitment to understanding diverse health challenges.

Her work focuses on a broad range of global health issues, including sexual and reproductive health, women's empowerment, migrant health, and mental health, with a particular emphasis on community participatory research and qualitative methodology. Dr. Withers' dedication to pedagogical excellence has been recognized through several teaching awards, underscoring her ability to inspire and educate the next generation of health professionals.

She earned her Ph.D. in Community Health Sciences from the UCLA Fielding School of Public Health, a Master's in Health Sciences from Johns Hopkins Bloomberg School of Public Health, Department of International Health, and a B.A. in Global Development from UC Berkeley. Dr Withers has published over 100 scientific papers, 6 book chapters, and has co-edited two global health books- Global Health Leadership: Case Studies from the Pacific Rim and Global Perspectives on Women's Sexual and Reproductive Health Across the Lifespan. She is the co-editor-in-chief of the Journal of Public Health and Emergencies.



Erlinda Castro-Palaganas, University of the Philippines Baguio

Erlinda Castro-Palaganas is an internationally esteemed nurse leader, researcher, and academician. A pioneer in qualitative nursing research and a multi-awarded health research mentor, she founded the Philippine Nursing Research Society, Inc. and the Cordillera Center for Research and Health Concerns. She currently serves as Vice President for External Affairs of the Philippine Association of Medical Journal Editors and Executive Vice President of the Asia Pacific Association of Medical Editors.

She teaches Advanced Qualitative Research, Health Policy and Advocacy, and Health Ethics at the University of the Philippines (Baguio and Manila). She is a member of the Philippine Nurses Association Council of Leaders and the Editor-in-Chief of the Philippine Journal of Nursing, a Scopus and WHO-WPRIM indexed publication. Her lifelong commitment to nursing is grounded in public service, advocacy, and social justice, embodying her role as a true "people's nurse."

In recognition of her contributions to the development of the nursing education, research, health and human rights, she was named a Fellow of the American Academy of Nursing (2021) and awarded the prestigious international Princess Srinagarindra Award in 2022.



King L Chow, Hong Kong University of Science and Technology

King L Chow is a Professor of Life Science, Chem. & Biol.Engineering, Public Policy. He served as the Director of Interdisciplinary Programs Office overseeing Environment and Sustainability, Public Policy, Risk Management, Technology Management, Integrative System & Design, and various innovation programs. He headed the Dean of Students Office supporting various student-oriented schemes and student development programs beyond academic issues.

While his research focuses on genetics, development, evolution and synthetic biology, he has been engaging in broad pedagogical initiatives and curricular development projects promoting interdisciplinary education at the juncture cutting across science, engineering, social science and humanity at high school, undergraduate and graduate levels. He was winner of the inaugural School of Science Teaching Award and the Michael G. Gale Medal of distinguished teaching at HKUST.

He is the Chair of the Executive Board, the University Alliance for Talent and Education Development coordinating 16 tertiary institutions in Asia Pacific region. He serves on the Board of Directors of the iGEM Foundation and as a council member of Global Future Council, World Economic Forum.



Sofia Gruskin, University of Southern California

Sofia Gruskin is a Director USC Institute on Inequalities in Global Health, Chief, Policy and Global Health Division, and Professor USC Keck School of Medicine and USC Gould School of Law, University of Southern California. Professor Gruskin is recognized as a pioneer in fostering multi-disciplinary approaches to global health with work ranging from global policy to the grassroots level, and is particularly recognized for her efforts to bring attention to the effects of law and legal frameworks on health outcomes for key and vulnerable populations.

Her work has been instrumental in developing the conceptual, methodological and empirical links between global health and human rights, with a focus on sexual and reproductive health, child and adolescent health, HIV/AIDS, gender-based violence, non-communicable disease and health systems. She has worked closely with the United Nations system, in particular WHO and UNDP, for many years.

Professor Gruskin is an associate editor for Global Public Health, on the editorial advisory board for Revue Tiers Monde, a trustee of Sexual and Reproductive Health Matters, and was an associate editor of the American Journal of Public Health and editor in chief for Health and Human Rights, both for over a decade.



Jonathan Guillemot, Universidad San Francisco de Quito

Jonathan Guillemot is a professor and researcher in gerontology at Universidad San Francisco de Quito USFQ, Ecuador. He currently acts as director of the One Health Office and as director of the Institute for Social Medicine & Global Challenges. Dr. Guillemot's research interests include the sociology of ageing and research pedagogy, using qualitative approaches, with particular focus on semi-structured interviews and Delphi panels. He is especially fond of collaborating with students on their first encounter with research. Dr. Guillemot graduated from Université de Lille (Sciences Po Lille) in political sociology and from King's College London in gerontology and completed his PhD in global health, social medicine and gerontology.



Budi Haryanto, Universitas Indonesia

Budi Haryanto is a Professor of Environmental Health at Faculty of Public Health Universitas Indonesia (UI) and Director of Research Center for Climate Change UI. He is Board of Directors of the Pacific Basin Consortium on Environment and Health 2008-present, Committee Member for International Society for Environmental Epidemiology (ISEE) 2020-present, Fellow at Collegium Ramazzini 2020-present, and an Honorary Visiting Fellow of the Global Research Centre HEAL at the University of Canberra 2024-2025.

He got degrees on environmental health and epidemiology from Universitas Indonesia and UC Los Angeles respectively. His publication more than 90 papers on environmental epidemiology, climate change, air pollution, and disaster health impacts included 14 book chapters and as an editor Air Pollution's book. He was also actively involved on scientific climate talks at UNFCCC-IPCC's COP 15 Copenhagen 2009, COP 21 Paris 2015, COP 22 Marrakech 2016, and East West Center Honolulu 2022. Most currently, he attended The WHO 2nd Global Conference on Air Pollution and Health in Cartagena, Colombia, May 2025 as Invited Speaker.



Jiayan Huang, Fudan University

Jiayan Huang is dedicated to advancing global health and equitable access to healthcare for marginalized communities. With an extensive background in global health governance, health technology assessment, and health policy analysis, she has spearheaded numerous international collaborative research initiatives in countries including Tanzania, the Democratic Republic of the Congo, Pakistan, Vietnam, Laos, Solomon Island, Vanuatu, etc. With over 40 projects under her leadership, she has secured funding from prestigious institutions like the China National Social Science Foundation, China National Natural Science Foundation, WHO, World Bank, Cyrus Tang Foundation, as well as various local governmental bodies. Her contributions extend to academia, evident through the publication of 5 academic monographs and over 140 articles in reputable journals.



Masamine Jimba, University of Tokyo

Masamine Jimba is an emeritus professor at the University of Tokyo. He studied at Japan's National Institute of Public Health and the Harvard School of Public Health. His practical experience includes disease control and health promotion activities in resource limited settings, first as a WHO Health Coordinator for the Gaza Strip and the West Bank from 1994 to 1996. From 1996 to 2001, he implemented health promotion programs in rural Nepal, using a community development approach, as a public health expert with the Japan International Cooperation Agency. In 2002, he returned to Japan to have a base in the university and has been working on health projects in Asia, Africa, and Latin America. His current research interests include health promotion, global health policy, health and development, and maternal, newborn, and child health.



Mu Li, University of Sydney

Mu Li is a Professor of International Public Health at School of Public Health, the University of Sydney. Her main research contributions are in women's and children's health and nutrition, and public health program evaluation. She has a strong track record in developing cross cultural and cross discipline research collaborations in Asia and Africa, and led several research capacity building programs, including the Australian DFAT Regional Collaboration for Childhood Obesity Prevention Research, involving researchers from China, Indonesia, Thailand and Vietnam; and Evidence-based Policy and Program Development for Improved Adolescent Health and Nutrition, Indonesia. Professor Li is the founding convenor of the Sydney Global Maternal and Child Health Network. She led the development of the Australian first Master of Global Health program and was the inaugural director of the program.



Judith McCool, University of Auckland

Judith McCool is a Professor and Head of School of Population Health, University of Auckland and co-Director of Te Poutoko Ora a Kiwa. Judith's work focuses on global health, particularly in respect to the Pacific region, digital and social media, social, cultural and environmental determinants of health, non-communicable diseases (NCDs), mental health. Her work often explores the intersection of health policy, equity, and digital communication in public health. Judith has long-term partnerships with colleagues in the Pacific region as evidenced in her various roles in Aotearoa New Zealand Polynesia Health Corridors Programme (Ministry of Health), the Fred Hollows Foundation NZ, Health Coalition Aotearoa, as a member of the Asia Pacific Rim Universities Global Health Steering Group, advisor for WHO Western Pacific Region, an a collaborator on multiple international research grants, programme lead for Global Health and supervisor of graduate students at the University of Auckland



Juhwan Oh, Seoul National University

Juhwan Oh is a Professor of International Health Policy and Management of Seoul National University College of Medicine. He is interested in Maternal, Child, and Adolescent Health, Health Insurance Policy, Health Inequality, and Smart Health City. He is serving as an international cooperation advisor for Korea Diseases Control and Prevention Agency and a committee chair for medical education in Korean Society for Preventive Medicine. He also serves as Chair for Health at World Health City Forum. He served as the founding editor-in-chief of Journal of Global Health Science, which is the official journal of Korean Academic Association of Global Health.



Manuel Perez Jimenez, Tecnológico de Monterrey

Manuel Perez Jimenez is a Director of the Early Childhood Center at Tecnológico de Monterrey, since 2017. He served as Dean of the School of Medicine and Health Sciences between January 2017 to May 2025. He is currently Chairman of Medicine at U21 Health Sciences Group since January 2019. Between September 2010 and September 2013 he was Chairman of the Strategic Committee of the UN Millennium Development Goals interest group from the Universitas 21 Health Sciences Group. Dr Perez Jiménez did a Global Health training at George Mason University in Virginia USA, an Adizes training at the Tecnológico de Monterrey.



Additionally, Dr Perez Jiménez has occupied several teaching positions in the courses of In-Patient Pediatrics, Ambulatory Pediatrics and Introduction to Medicine and Global Health at the Tec de Monterrey School of Medicine. Since his designation as Teaching Coordinator for Postgraduate Programs at the Tec de Monterrey School of Medicine in 2003, he has shown an extraordinary capacity to work comprehensively and scheme his formative vision in the health context.

He had an active leadership role during the COVID 19 pandemic together with the Tecnológico de Monterrey's health services (TecSalud), through the impulse of digital education with forums and lectures, as well as through the promotion and development of health care during this pandemic.



Sanjay Rampal A/L Lekhraj Rampal, Universiti Malaya

Sanjay Rampal is an Executive Director of Research Development at Universiti Malaya and a Professor of Epidemiology and Public Health Physician. He also heads the Western Pacific Regional Training Centre, which is supported by the Special Programme for Research and Training in Tropical Diseases (TDR). Medically trained in India, he served in Malaysia's Ministry of Health before earning a Master of Public Health from Harvard University and a PhD from Johns Hopkins University.

He is Certified in Public Health (CPH) by the US National Board of Public Health Examiners. Dr. Rampal aims to drive transformative growth in research and education within public health. He seeks to improve the nation's health by focusing on the prevention of cardiovascular and metabolic diseases, as well as their intersection with cancer and certain communicable diseases. Dr. Rampal is dedicated to advancing public health through excellence in research, education, and collaborative leadership.



Adriana Rojas (APRU)

Adriana Rojas is a Senior Director of APRU Programs, has over 25 years of experience in international higher education. She is a professional specialising in intercultural communication, global strategy and corporate diplomacy. Her experience spans the education sector, private sector, consultancy, and international organisations. Before this position, she was the Director of Strategic Partnerships at the Centre for Human Dignity and National Director of Asia Pacific Relations at Tecnológico de Monterrey, Mexico. Adriana previously led areas of long-life learning and international liaison offices in Boston and at Yale University, USA.

For more than 15 years, she has actively participated in international forums and consortia that link and develop strategic and international programs between Asia and Latin America, including UAF, RIMAC, APAIE, the Asia Pacific Six Universities Consortium, and ONE. She has been a guest researcher and speaker in America and Asia. Adriana has a Master's in Asian Studies. She has pursued further training at the University of Hull, UK, and has received fellowships from the Tokyo Foundation, the Japan Foundation, and El Colegio de Mexico.



Taninee Sahakitrungruang, Chulalongkorn University

Taninee Sahakitrungruang is a Professor at the Department of Pediatrics, Faculty of Medicine, Chulalongkorn University, Bangkok, Thailand. She did her training in Pediatrics and in Pediatric Endocrinology at Chulalongkorn University, and an additional two years of fellowship (2008-2010) at the University of California, San Francisco with Professor Walter L Miller. She has been appointed as Assistant Dean for Graduate Affairs since 2019 and is a member of the steering committee to develop global health/one health curriculum for the newly established School of Global Health at the Faculty of Medicine, Chulalongkorn University. Her key research interests include pediatric diabetes and NCDs, molecular defects of adrenal steroidogenesis, disorders of sex differentiation, and gender diversity healthcare.

She has a number of publications in highly-ranked journals including several implementation research and intervention to improve quality of life for pediatric patients in middle-income countries. Dr. Sahakitrungruang is an executive member of several professional organizations including Diabetes Association of Thailand, Thai Society of Pediatric Endocrinology, and AsiaPATH. She is also an advisory board member of Action4Diabetes (A4D) foundation aiming to leverage the quality of life for children living with type 1 diabetes in Southeast Asia.

She is an active member to work closely with Ministry of Public Health and National Health Security Office to push the policy for reimbursement of essential insulin, glucose strips and continuous glucose monitoring for people living with type 1 diabetes in Thailand.



Martin CS Wong, Chinese University of Hong Kong

Martin CS Wong is a specialist in Family Medicine and a researcher in the field of cancer screening and prevention of chronic diseases. Professor Wong has composed over 300 publications in international peer-reviewed journals, and received over 15 research awards for studies in his research area, including the prestigious “1st Distinguished Research Making Family Medicine Shine Award” by the World Organization of Family Doctors in 2018.

He is the Co-Chair of the NCD stream of APRU Global Health Programme; Co-Chairman of the Grant Review Board, Health and Medical Research Fund, Food and Health Bureau (FHB); the Convener of the Advisory Group on Hong Kong Reference Framework for Care of Diabetes and Hypertension in Primary Care Settings; a member of the Expert Advisory Panel in Implementation Science of the HKSAR government, and a member of the Research Council of the FHB.

He is a reviewer of the Medical Research Council (MRC), United Kingdom; expert reviewer of the National Medical Research Council (NMRC), Singapore; external examiners of doctoral thesis in various Universities; and an external reviewer of the Public Policy Research Funding Scheme, Research Grant Council (RGC) of Hong Kong. His enthusiasm to teaching has been well received by students and has been selected for the “Master Teacher” and the “Annual Teacher of the Year Award” for seven years.



APRU Global Health Program Working Group Leaders

Ageing



Andrew Sixsmith, PhD is a Professor in the Department of Gerontology at Simon Fraser University and is Director of the Science and Technology for Aging Research (STAR) Institute at Simon Fraser University. He was the Scientific Director of AGE-WELL Network of Centres of Excellence (NCE) between 2015-2020 and the Associate Scientific Director between 2020-2022. He is now an AGE-WELL Network Advisor. Dr. Sixsmith was past President of the International Society of Gerontechnology from 2014-16 and was previously Director of the Gerontology Research Centre and Deputy Director of the IRMACS Centre at SFU. His research interests include technology for independent living, theories and methods in aging and understanding the innovation process.

His work has involved him in a leadership and advisory role in numerous major international research projects and initiatives with academic, government and industry partners. He received his doctorate from the University of London and was previously a lecturer at the University of Liverpool in the Institute of Human Ageing and Department of Primary Care.



Zhaoli (Joy) Dai-Keller, PhD, MS, MA is an Honorary Senior Lecturer at the School of Pharmacy, University of Sydney, and a full-time Lecturer (Assistant Professor) at the School of Population Health, UNSW. As a passionate nutritional epidemiologist, Joy is dedicated to promoting sustainable diets and nutrition to support healthy aging and longevity, especially among older adults from diverse backgrounds. She has led multiple projects using population-based cohorts, nationally representative survey data, and electronic health records in Singapore, the US, and Australia to study dietary factors and other modifiable risk factors for the development and management of chronic diseases, including hip fractures, osteoarthritis and pain, obesity, cardiovascular disease, and mental health.

Bioethics



Leander Penaso Marquez teaches philosophy, educational foundations, values education, and research ethics courses at the College of Education, University of the Philippines Diliman. He holds an MA in Philosophy degree and an MA in Education degree from UP Diliman. He also has a Master of Health Research Ethics (MOHRE) degree from Universiti Malaya, Malaysia. Apart from serving as Co-chair of the Working Group on Bioethics of the Association of Pacific Rim Universities (APRU) Global Health Program, Leander is also the Founding President of the Philosophical Inquiry in Schools Initiative Philippines, Inc. (ISIP Pinas), and a member of the Southeast Asia Bioethics Network (SEABioN). His research interests include Ethics, Epistemology, Bioethics, Research Ethics, Philosophy for Children, Philosophy of Education, Education Policy, and Philosophy and Popular Culture.



María de Jesús Medina-Arellano, PhD is a Senior Researcher and Professor, Institute for Legal Research (IIJ), National Autonomous University of Mexico (UNAM). She is a distinguished member of the Mexican Academy of Sciences, the International Association of Bioethics, the College of Bioethics (Mexico), and the Mexican Society for Stem Cell Research. Her interdisciplinary expertise lies in bioethics, biolaw, and health regulation. She holds a Law degree from the Autonomous University of Nayarit, a graduate specialization in Philosophy and Pedagogy of Law from UNAM, and a PhD in Bioethics and Medical Jurisprudence from the Centre for Social Ethics and Policy, University of Manchester (UK), funded by the World Bank's ORS scholarship and CONAHCYT.

Currently, she coordinates the project “Bioética Feminista”, along with Dr. Pauline Capdevielle, funded by PAPIIT, UNAM. She has also coordinated projects on regulation of new reproductive technologies and human genome, stem cell research and ethics of public health. Since 2015 she coordinates the Diploma on Bioethics, Health Law and Biolaw at the IIJ, UNAM. Dr. Medina Arellano's research has significantly influenced bioethical regulation, health policy development, and the consolidation of international scientific networks. Her leadership is reflected in robust academic output, global expert engagement, and strategic project evaluation.

She has served as an invited expert for The Royal Society, the National Academy of Medicine of Mexico, and the U.S. National Academy of Sciences. She is a member of Mexico's National Immunization Technical Advisory Group (NITAG), having served on the national GTA-COVID19 task force of the Ministry of Health. Notably, she coordinated the Bioethics Guide for Resource Allocation in Emergencies, developed within the Ethics Committee of the General Health Council — now a global reference for equitable ICU and critical care allocation.



Alexander Atrio L. Lopez is a second-year law student at the Ateneo de Manila University (ADMU) School of Law, Co-Chair of the Association of Pacific Rim Universities (APRU) Bioethics Working Group, and a Board Member of the Philosophical Inquiry in Schools Initiative Philippines, Inc. (ISIP Pinas). He has co-authored academic articles published by the University of the Philippines (UP), Wiley, Springer, and Cambridge on bioethics, philosophy for children, and philosophy and video games. He was formerly an Instructor of the Department of Philosophy of UP Diliman for seven years where he taught 12 different courses including ethics, ancient philosophy, modern philosophy, and logic. From the same campus, he earned his degrees in MA Philosophy and BA Philosophy (summa cum laude, Valedictory Speaker). His first degree is BS Basic Medical Sciences from UP Manila.

Global Health Education and Technology



Catherine Zhou, PhD is a Teaching Associate at the Office of the Dean of Engineering, The Hong Kong University of Science and Technology. Prior to this she worked at the Centre for Learning Enhancement And Research at The Chinese University of Hong Kong. She has a PhD degree in computer science and engineering and currently focuses on research postgraduate (RPg) student education. Her teaching and research interests include research integrity and ethics and RPg students' mental health. She is in charge of the RPg student professional development program within the School of Engineering. She is interested in student-centered teaching and learning and e-learning.



Nina T. Castillo-Carandang, MA, MSc, PhD is a professor of health sociology and global health; and is the Chair of the Department of Clinical Epidemiology, College of Medicine, University of the Philippines Manila (UPM). Professor Castillo-Carandang also has academic qualifications in clinical epidemiology and health social science. She is an active researcher on Kagalingan (wellbeing), and the sociocultural dimensions of health and health care; and is also a member of the UPM Research Ethics Board.

Humanitarian Emergencies and Health



Ann Toh, MD works as a home hospice physician delivering family-centred whole person care to children with life-threatening, life-limiting illness in StarPALS, HCA Hospice Care. She also serves as a volunteer physician and advocate for vulnerable people groups. Ann serves as a clinician-educator for the School of Medicine, National University of Singapore and is actively involved in shaping undergraduate curriculum in the areas of community-based education for social determinants of health, social accountability, interprofessional education and compassion training. She has initiated and continues to nurture a local community of practice on Humanism & Humanities in Healthcare and has developed an innovative educational model for service learning using approaches grounded in Rogerian educational philosophy to nurture the next generation of compassionate healers of tomorrow. Within academia, Ann advocates for compassionate whole person care through pursuing the development of research in medical education, applied health services research & community-based patient-centred models of care.



Suhyoan Choi, PhD is a global health scientist specializing in social epidemiology, dedicated to advancing gender and health equity in low-resource settings through Human Rights-Based Approaches. She earned her doctorate from the University of Tokyo, where her research addressed gender-based health disparities. Currently, Dr. Choi serves as a postdoctoral fellow at the Centre for Family and Population Research at the National University of Singapore, where she explores how gender inequalities, particularly during early life, affect girls' and women's long-term health outcomes in low- and middle-income countries.

Dr. Choi utilizes a life-course framework to investigate the enduring impacts of early-life and gender-based adversities, advocating for community-centered and inclusive interventions that ensure no one is left behind. Her methodological expertise spans intervention research, field experiments, and rigorous secondary analyses of large-scale data from diverse settings.

In addition to her academic work, Dr. Choi has practical experience in humanitarian global health initiatives, having worked in the Philippines and Malawi with the World Health Organization - Western Pacific Region and Korea International Cooperation Agency-funded projects. Through her interdisciplinary, rights-based approach, she aspires to contribute to evidence-informed policies that reduce inequalities and promote a more equitable and healthier global society.



Gil P. Soriano, PhD received his Bachelor of Science in Nursing (BSN) degree from Pamantasan ng Lungsod ng Pasay in 2010. In 2015, he earned his Master of Health Professions Education (MHPEd) from the University of the Philippines Manila under a UP Presidential Scholarship Grant. His master's thesis was partly funded by the University of the Philippines- National Institutes of Health and the National Teachers Training Center for the Health Professions. He completed his PhD in Health Sciences at Tokushima University, Japan. He received funding from the Fujii-Otsuka International Exchange Fund for his PhD studies and was awarded the Outstanding Student Research Award. Last July 2024, he completed his 2nd PhD, PhD in Nursing at Silliman University.

He is the Managing Editor of the Journal of Health and Caring Sciences (JHCS), the official health and caring research publication of San Beda University, as well as a member of San Beda University- Research Ethics Board (SBU-REB). He is a Full Professor and the Chair of the Ethics Committee at the National University, Manila Philippines. He has presented research in various national and international research fora and has published a number of research articles in reputable journals. His research interests focus on public health, caring science, palliative and end-of-life care, and nursing pedagogy.

Mental Health



Xin (Summer) Xu, PhD is a Professor of Epidemiology and Neuropsychology at School of Public Health and the 2nd Affiliated Hospital of Zhejiang University, China. Dr. Xu's main research areas encompass neurocognition and neuropsychiatry, with a particular interest in screening, diagnosis, and preventive interventions for dementia, cognitive impairment and neuropsychiatric disorders. She has published over 90 articles in renowned journals such as Lancet Psychiatry, Lancet Regional Health, Alzheimer's & Dementia, Neurology, Brain, Stroke. She was awarded the Hundred Talent Young Professor by Zhejiang University, New Investigator Award by Alzheimer's Association, along with other honours. Dr. Xu currently serves on the Scientific Program Committee of the International Alzheimer's Association, as well as the board of Alzheimer's Disease China.



Yan Wang, PhD, is an Assistant Adjunct Professor in the Section of Public and Population Health at UCLA's School of Dentistry. She specializes in survey design, data science, and machine learning applications in public health and dentistry. Dr. Wang's research focuses on the oral microbiome, salivary biomarkers, and their associations with systemic health. She is the Principal Investigator (PI) of several NIH-funded projects, including studies on the oral microbiome development of Latinx children at the U.S.-Mexico border, the impact of HIV on oxidative stress and the oral microbiome, the microbiome of children living with HIV, HIV-exposed uninfected (HEU), and HIV-unexposed uninfected (HUU) in Kisumu, and the resilience of youth living in informal settlements in Kenya. She earned a PhD in biostatistics from UCLA.



Non-Communicable Diseases



Junjie Huang, MD is a Chair of the NCD Working Group since 2022. He is an Assistant Professor at the JC School of Public Health and Primary Care and the Deputy Director of the Centre for Health Education and Health Promotion (CHEHP), Faculty of Medicine, Chinese University of Hong Kong (CUHK); a Lead Researcher of the Global Health Focus Epidemiology Group (GHFEG) and the Asia Pacific Primary Care Cancer (APPCC) Research Group. He is the principal investigator for more than 10 research and knowledge transfer projects.

He received more than 20 research awards for his outstanding public health and cancer research, including the President's Prize for Best Paper from the Hong Kong College of Community Medicine (HKCCM), Early Career Researcher Award in Cancer Primary Care Research at the University of Toronto, the World's Top 2% Scientists Recognition from Stanford University (2023-2024), and Healthy Women, Healthy Economies (HWHE) Research Prize from the Asia-Pacific Economic Cooperation (APEC) in 2023. His research focuses on Cancer Epidemiology and Prevention, Big Data Medical Research and Digital Health, and Primary Care Health Education and Promotion.

He has led the NCD Working Group to publish many research articles in top international peer-reviewed journals, such as Lancet Haematology, Gastroenterology, Journal of Haematology and Oncology, Neuro-Oncology, Chest, and European Journal of Epidemiology. He currently serves on the editorial board of the Hong Kong Medical Journal, Journal of Korea Medical Science, Public Health Challenges, and Scientific Reports.



Chenwen (Claire) Zhong, PhD is currently a Research Assistant Professor at the JC School of Public Health and Primary Care and the Deputy Director at the Center for Health Education and Health Promotion, Faculty of Medicine, The Chinese University of Hong Kong. She is a member of the Professional Society for Health Economics and Outcomes Research and serves on the Editorial Boards of the Hong Kong Medical Journal and the Chinese General Practice Journal. Dr. Zhong obtained her Bachelor's and Master's degrees in Medicine from Sun Yat-sen University and her PhD in Public Health from The Chinese University of Hong Kong. She has received extensive training in big data analysis, evidence-based medicine, primary care research, guideline development, and implementation science.

Building on this strong foundation, Dr. Zhong's future research agenda will focus on three key areas within primary care: i) the prediction of non-communicable disease especially cancer risk, including drug-drug comparison analysis, big data analysis, and machine learning; ii) the development and implementation of evidence-based, locally adaptable primary care guidelines, particularly for cancer prevention and chronic disease management; ii) the integration of Traditional Chinese Medicine with conventional medical practices in primary care. Dr. Zhong has actively secured research funding, with a total exceeding HK\$5 million, and has published numerous research articles in esteemed international peer-reviewed journals as the first or corresponding author.



Nursing



Erlinda Castro Palaganas, PhD is an internationally esteemed nurse leader, researcher, and academician. A pioneer in qualitative nursing research and a multi-awarded health research mentor, she founded the Philippine Nursing Research Society, Inc. and the Cordillera Center for Research and Health Concerns. She currently serves as Vice President for External Affairs of the Philippine Association of Medical Journal Editors and Executive Vice President of the Asia Pacific Association of Medical Editors. She teaches Advanced Qualitative Research, Health Policy and Advocacy, and Health Ethics at the University of the Philippines (Baguio and Manila).

She is a member of the Philippine Nurses Association Council of Leaders and the Editor-in-Chief of the Philippine Journal of Nursing, a Scopus and WHO-WPRIM indexed publication. Her lifelong commitment to nursing is grounded in public service, advocacy, and social justice, embodying her role as a true "people's nurse." In recognition of her contributions to the development of the nursing education, research, health and human rights, she was named a Fellow of the American Academy of Nursing (2021) and awarded the prestigious international Princess.



APRU Global Health Conference 2025

Towards Planetary Health Equity: A Global Call for Shared Solutions



APRU Members

The Association of Pacific Rim Universities (APRU) is a consortium of leading research universities from the Americas, Asia, Australia and New Zealand, established in 1997.

It comprises of 60 member universities from 18 economies across the Pacific Rim region, representing a diverse and influential academic community with over 200,000 academic staff and 2 million students.

APRU's mission is to foster collaboration among its members in education, research, and innovation to address the grand challenges facing the Asia-Pacific region and the world.

APRU Membership

APRU membership is comprised of leading universities from 18 economies of the the Pacific Rim known worldwide for their academic and research excellence.





International Organising Committee



Mellissa Withers (Director), APRU Global Health Program

Mellissa Withers is the director of the APRU Global Health Program. She is a Professor at the University of Southern California Keck School of Medicine in the Department of Population and Public Health Sciences, where she is also Director of Pedagogical Enrichment and Training. Her primary research interests lie in community participatory research, mental health, gender-based violence, and global sexual and reproductive health. Dr Withers earned a PhD from the Department of Community Health Sciences at the UCLA Fielding School of Public Health, a Master's in Health Sciences from the Department of International Health, Johns Hopkins Bloomberg School of Public Health, and a BA in international development from UC Berkeley. Dr Withers is the editor of two books: *Global Perspectives on Sexual and Reproductive Health Across the Lifecourse*, and *Global Health Leadership: Case Studies from the Asia-Pacific*. She has also published more than 80 scientific articles and serves on the editorial boards of six international global health journals.

More: https://www.apru.org/program_leaders/dr-mellissa-withers/



Christina Schönleber, Chief Strategy Officer, APRU International Secretariat

Christina Schönleber, Chief Strategy Officer at the Association of Pacific Rim Universities has extensive expertise in translating research to impact. She holds responsibilities for developing and growing APRU's strategic policy impact to address pressing regional challenges through the association's key program areas, working closely with leading scientists and policy makers in the Asia Pacific.

More: <https://www.apru.org/secretariat/christina-maria-schonleber/>



Benjamin Zhou, Program Manager, APRU International Secretariat

Benjamin Zhou is a Program Manager responsible for implementing research-based, policy-oriented and collaborative programs among academics, university leaders and other stakeholders.

More: <https://www.apru.org/secretariat/benjamin-zhou/>



Local Organising Committee

Advisory Board



Professor Dr Yvonne Lim Ai Lian
Associate Deputy Vice-Chancellor
(Academic and International),
Universiti Malaya.



Professor Dato Dr Yang Faridah Abdul Aziz
Dean, Faculty of Medicine,
Universiti Malaya.



Professor Dr Sanjay Rampal Lekhraj Rampal
Executive Director, Department of Research Development,
Office of Deputy Vice-Chancellor (Research & Innovation),
Universiti Malaya.

Conference Chair and Co-chair



Professor Dr Victor CW Hoe
Head,
Department of Social and Preventive Medicine,
Faculty of Medicine,
Universiti Malaya.



Professor Dr Noran Naqiah Hairi
Deputy Dean (Research),
Faculty of Medicine,
Universiti Malaya.



Secretariat



Devi Peramalah



**Saidatul Suraya
Mohd Fodzi**



**Shathanapriya
Ammikapathi**



**Darishiani
Paramasivam**



**Nursabrina
Yasmin Hamdan**



**Syukriah
Mat Yatya**

Scientific Programme



**Associate Professor
Dr Tharani
Loganathan**



**Dr Bala Murali
Sundram**



**Dr Nithiah
Thangiah**



Suhaili Suboh



**Nur Hashimah
Kaman Redzawan**



**Noorazlina
Mohamad**

Finance



Dr Ng Ai Kah



**Associate
Professor Dr
Lim Yin Cheng**



**Dr Kwong Soke
Chee**



Haridah Alias



Sponsorship



**Professor Dr Nirjala
Bhoo Pathy**



**Dr Nur Afiqah Mohd
Salleh**



Devi Peramalah



**Darishiani
Paramasivam**

Visibility and Multimedia (Webmaster)



**Professor Dr Victor
CW Hoe**



**Muhammad Haizril
Arif Md Mokhtar**

Publicity and Promotion



**Dr Rumana
Akhter Saifi**



**Dr Howie Lim
Sin How**



**Shamsina
Shamsuddin**

Publication



**Dr Catherine
Thamarai
Arumugam**



**Muhammad Haizril
Arif Md Mokhtar**



Event and Protocol



Dr Siti Idayu Hasan



**Dr Rama Krishna
Supramanian**



**Dr Mila Nu
Nu Htay**



Norchaya Yahaya

Logistics



**Professor Dr
Rafdzah Ahmad
Zaki**



**Associate Professor
Dr Nik Daliana
Nik Farid**



**Saidatul Suraya
Mohd Fodzi**

Transportation



**Professor Dr Wong
Li Ping**



Norlissa Gani



Kamar Junus

Food and Catering



**Professor Dr Mas
Ayu Said**



Dr Maslinor Ismail



**Associate Professor
Dr 'Abqariyah
Yahya@Ahmad Noor**



**Noor Rasida
Abdullah**



**Mohd Haniff
Romainoor**



Conference Dinner Committee



**Professor Dr Claire
Choo Wan Yuen**



**Associate Professor
Dr Farizah Mohd
Hairi**



**Nur Fadhlina
Othman**

APRU Global Health Conference Dinner 2025 and the Inauguration of the APRU Orchestra (By Invitation Only)

APRU UNIVERSITI MALAYA ASEAN UMWEEK2025

**APRU Global Health
Conference Dinner
2025**
*and the
Inauguration
of the
APRU Orchestra*

29 October 2025, Wednesday
5.30 pm - 9.30 pm
Wyndham Grand Bangsar
Kuala Lumpur

Dress Code: Traditional Attire

Programme

5.30 pm - 5.45 pm
Arrival and Registration

5.45 pm - 5.55 pm
Welcoming Remarks
YBhg. Professor Dato' Seri Ir Dr Noor Azuan Abu Osman
Vice Chancellor of Universiti Malaysia

5.55 pm - 6.55 pm
Inauguration of the APRU Orchestra
A Symphony of Culture - East Meets West
by
Professor Dr Mohd Nasir Hashim
Conductor, APRU Orchestra 2025
Faculty of Creative Arts, Universiti Malaysia

6.55 pm - 7.45 pm
Refreshments
Networking and Looping Video Montage

7.45 pm - 8.00 pm
Special Remarks
Professor Dr Victor CW Hoe
Chair, APRU Global Health Conference 2025

8.00 pm - 9.30 pm
APRU Global Health Conference Dinner
Delicious 8 Courses Chinese Cuisine with Live Music

9.30 pm
End of Programme

Conference Agenda

Pre-conference Workshops: Tuesday, 28 October 2025

10:00 – 12:00 hrs	Pre-conference Workshop 1 Preparing Health Systems for the Future of AI for Health: Ethical Challenges and Lessons Learned
	Preconference Workshop 2 Implementation Science for All: Advancing Equity and Access in Health
12:00 – 13:00 hrs	Lunch
13:00 – 16:00 hrs	Pre-conference 1 and 2 (Continue)
16:00 – 16:30 hrs	Afternoon Refreshments
18:00 – 20:00 hrs	Advisory Group Dinner (by invitation only)

Day 1 Conference: Wednesday, 29 October 2025

07:30 – 08:30 hrs	Registration and Arrival of Guests
08:45 – 08:50 hrs	Arrival of Vice-Chancellor of Universiti Malaya YBhg. Professor Dato' Seri Ir. Dr. Noor Azuan Abu Osman
08:50 – 09:05 hrs	Arrival of Minister of Health, Malaysia YB Datuk Seri Dr. Dzulkefly Ahmad
09:05 – 09:10 hrs	National Anthem (Negaraku)
09:10 – 09:20 hrs	Remarks by Senior Director of APRU Programs YBrs. Adriana Rojas Martinez
09:20 – 09:30 hrs	Remarks by Vice-Chancellor of Universiti Malaya YBhg. Professor Dato' Seri Ir. Dr. Noor Azuan Abu Osman
09:30 – 09:35 hrs	Montage Presentation
09:35 – 09:45 hrs	Conference Officiating Address by Minister of Health, Malaysia YB Datuk Seri Dr. Dzulkefly Ahmad
09:45 – 09:55 hrs	Gimmick Ceremony: Tree Planting Campaign
09:55 – 10:00 hrs	Photo Session
10:00 – 10:30 hrs	Morning Refreshments
10:30 – 11:10 hrs	Keynote Address Professor Emerita Datuk Dr. Asma Ismail

11:10 – 11:25 hrs	Introduction to APRU by the Global Health Program Director Professor Dr. Mellissa Withers
11:25 – 12:25 hrs	Student Virtual Case Competition
12:25 – 13:30 hrs	Lunch and Network e-Poster Presentations (Session 1)
13:30 – 14:30 hrs	Forum 1 War, Displacement, and Health: Addressing the Silent Crisis in Conflict Zones
14:30 – 16:00 hrs	Symposium Sessions 1 PS1 – Migration and Health Justice: Shared Solutions for a Changing World PS2 – Global Health Ethics & Justice: Bridging Gaps in Care, Access, and Policy PS3 – Climate Change and the Global Disease Burden: Emerging Health Threats in a Warming World
16:00 – 17:00 hrs	Parallel Session 1: Oral Presentations (OP1-OP4) OP1 – Migration Health OP2 – Global Health Workforces, Bioethics & Antimicrobial OP3 – Climate Change & Health OP4 – Artificial Intelligence and Healthcare & Indigenous Health
17:00 – 17:10 hrs	Afternoon Refreshments
17:30 – 21:30 hrs	Inauguration of APRU Orchestra and Conference Dinner (by invitation only)

Day 2 Conference: Thursday, 30 October 2025

07:30 hrs onwards	Registration
08:00 – 09:00 hrs	Parallel Session 2: Oral Presentations (OP5-OP8, OP19) OP5 – Climate Change & Health OP6 – Health System & UHC OP7 – Non-Communicable Diseases OP8 – Global Health Education & Technology OP19 – Bioethics & Climate Change
09:00 – 10:30 hrs	Symposium Sessions 2 PS4 – Bridging Climate Mitigation and Adaptation for Health Equity: Innovations, Policies, and Community Resilience PS5 – Towards Resilient Health Systems: Economic Policy and Governance Solutions PS6 – Sustainable Solutions to Non-Communicable Diseases (NCD) Prevention
10:30 – 10:45 hrs	Morning Refreshments e-Poster Presentations (Session 2)

10:45 – 12:15 hrs	Symposium Sessions 3 PS7 – Building Climate-Resilient Health Systems: Strategies for Sustainability and Equity PS8 – Technology & Global Health Education PS9 – One Health Approach to Tropical Diseases
12:15 – 13:00 hrs	Lunch e-Poster Presentations (Session 3)
13:00 – 14:00 hrs	Forum 2 Advancing Global Health Through Scientific and Technological Innovation
14:00 – 16:00 hrs	Conference Working Group Meetings
16:00 – 16:15 hrs	Afternoon Refreshments e-Posters Display
16:15 – 17:15 hrs	Parallel Session 3: Oral Presentations (OP9 – OP13) OP9 – Climate Change & Health OP10 – Migration & Health OP11 – Communicable Diseases OP12 – Mental Health OP13 – Global Health Nutrition
17:15 – 18.15 hrs	Parallel Session 4: Oral Presentations (OP14 – OP18) OP14 – Family Health OP15 – UHC and Migration & Health OP16 – Communicable Disease & Non-Communicable Diseases OP17 – Mental Health & Artificial Intelligence OP18 – Global Health Nutrition

Day 3 Conference: Friday, 31 October 2025

08:00 hrs onwards	Registration
08:30 – 09:30 hrs	Student-led Forum
09:30 – 09:45 hrs	Morning Refreshments
10:45 – 11:20 hrs	Closing Ceremony Universiti Malaya Song Awards Presentation
11:20 – 11:50 hrs	Closing Remarks by Associate Professor Dr Renzo Guinto
11:50 – 12:00 hrs	Closing Speech by APRU Conference 2025 Chair Professor Dr Victor Hoe Chee Wai Abdullah
12:00 – 12:05 hrs	Remarks by APRU Conference 2026 Chair Professor Dr Martin CS Wong
12:05 – 12:20 hrs	Group Photo
12:20 hrs onwards	Lunch and Adjourn

Speakers and Moderators

Forum 1

War, Displacement, and Health: Addressing the Silent Crisis in Conflict Zones

Armed conflict and forced displacement have precipitated a protracted health crisis in conflict-affected regions—one that extends far beyond the battlefield. Disrupted health systems, population displacement, and restricted humanitarian access leave millions—especially women, children, and marginalised groups—without essential healthcare. This forum confronts the structural, political, and ethical challenges of delivering health services in war zones and displacement settings.

Panel Members



Brigadier General (Dr) Mohd Arshil Moideen

Jeffrey Cheah School of Medicine and Health Sciences, Monash University, Malaysia

Brigadier General (Dr) Mohd Arshil Moideen is a public health specialist and epidemiologist with over two decades of leadership in operational and humanitarian medicine. He has led field hospital deployments in Afghanistan, Lebanon, Western Sahara, and Bangladesh, and played a critical role in Malaysia's pandemic response. His work focuses on military health logistics, disaster preparedness, and biosecurity.



Aymen Abdullah

Médecins Sans Frontières, MSF

Aymen Abdullah is a seasoned humanitarian leader with over 15 years of field experience in conflict zones including Sudan, Afghanistan, and Libya. Formerly a diplomat, he brings deep expertise in conflict analysis, humanitarian access negotiations, and strategic crisis leadership.



Dr Susheela Balasundaram

UNHCR Malaysia

Dr Susheela Balasundaram is currently the Community-Based Protection Officer at the UNHCR Malaysia office, overseeing programmes in public health, child protection & gender-based violence (GBV), and education for refugee populations. A graduate of Kasturba Medical College, India, she holds an MSc in Public Health from the London School of Hygiene & Tropical Medicine. She began working with refugees in Kuala Lumpur in 2002 via mobile primary care services, later joining Médecins Sans Frontières (MSF) Belgium in 2006, and has coordinated UNHCR Malaysia's public health and assistance efforts since 2007.

Moderator



Professor Dr Victor CW Hoe

Universiti Malaya, Malaysia

Professor Dr Victor CW Hoe is Professor of Occupational and Public Health at Universiti Malaya and a practising Occupational Physician at UMMC. He currently serves as Head of the Social and Preventive Medicine Department. His areas of expertise include ergonomics, worksite wellness, and health risk assessment. Professor Hoe has received numerous national and international awards in recognition of his contributions to occupational health and public health practice.



Forum 2

Advancing Global Health through Scientific and Technological Innovation

The rapid advancement of science and technology offers unprecedented opportunities to transform global health and accelerate progress toward the Sustainable Development Goals (SDGs). This forum will explore how cutting-edge scientific discoveries and innovative technologies can be harnessed to improve health outcomes, reduce disparities, and strengthen health systems worldwide. Emphasising sustainable, inclusive, and evidence-based approaches, the discussion will highlight breakthroughs in diagnostics, treatments, digital health, and biotechnology that address both communicable and non-communicable diseases.

Panel Members



Professor Dato' Dr Adeeba Kamarulzaman

Monash University, Malaysia

Professor Dato' Dr Adeeba Kamarulzaman is a leading infectious disease expert and advocate with extensive experience in HIV/AIDS research. Prof. Adeeba will share insights on how scientific innovation has transformed infectious disease management globally. Drawing from her leadership in translating research into impactful health programs, she will discuss the importance of integrating innovation with community engagement and health systems strengthening to achieve equitable global health outcomes.



Professor Dr Ong Teng Aik

Universiti Malaya, Malaysia

Professor Dr Ong Teng Aik is a prominent urologist and surgical innovator at the Universiti Malaya, specialises in minimally invasive and robotic-assisted urological surgeries, particularly robotic prostatectomy. He will contribute to the forum by discussing how advances in surgical robotics and precision technology are revolutionising patient care, improving surgical outcomes, and reducing recovery times.



Professor Dr Andrew Sixsmith

Simon Fraser University

Professor Dr Andrew Sixsmith is a gerontology and technology expert, will discuss the role of technology in promoting healthy ageing and independent living. He will highlight innovations such as ambient assisted living systems, telecare, and wearable health technologies that enhance quality of life for older adults and people with disabilities.



Professor Dr Christian Gonzalez-Billaut

Universidad de Chile, Chile

Dr Christian Gonzalez-Billaut is a Professor at the Universidad de Chile, Director of the Geroscience Center for Brain Health and Metabolism (GERO), and Adjunct Professor at the Buck Institute for Research on Aging. He earned his PhD in Cell Molecular Biology from the Center for Molecular Biology Severo Ochoa in Spain and began his independent research career in Chile in 2003.

Moderator



Associate Professor Dr Anand Sanmugam

Universiti Malaya, Malaysia

Associate Professor Dr Anand Sanmugam is a Consultant Paediatric and Neonatal Surgeon at Universiti Malaya, specialising in minimally invasive surgery for children. A passionate educator and leader, he co-directs the Master of Paediatric Surgery Programme and has been instrumental in developing Malaysia's National Postgraduate Medical Curriculum for Paediatric Surgery. He serves on several national committees, including the Malaysian Medical Council's Specialist Programme Evaluation Panel and the Paediatric Surgery Speciality Conjoined Board, and contributes to faculty development through MERDU.



Forum 3

Leveraging AI for Health Equity

Artificial Intelligence (AI) holds transformative potential to advance health equity by addressing disparities in healthcare access, quality, and outcomes. AI-driven tools can analyse vast and diverse datasets—including social determinants of health—to identify at-risk populations, tailor interventions, and optimise resource allocation to underserved communities.

Panel Members



Dr Maheshwara Rao Appanan

Ministry of Health, Malaysia

Dr Maheshwara Rao Appanan is a changemaker for Malaysia's Health Ministry at the Digital Health Department, driving AI integration in healthcare. He will share Malaysia's national digital health strategy, highlighting how AI-powered systems—such as MySejahtera and PADU—are enhancing value-based care and equitable access through improved surveillance, integration, and service delivery.



Associate Professor Dr Jeremy Lim Fung Yen

National University of Singapore, Singapore

Associate Professor Dr Jeremy Lim Fung Yen brings expertise in policy and ethical frameworks that guide the responsible use of artificial intelligence in healthcare. His work focuses on advancing health equity through inclusive data practices, algorithmic fairness, and multi-stakeholder collaboration, with the goal of developing sustainable and equitable AI-driven health solutions.



Professor Dr Peter A Sy

University of the Philippines, Philippines

Professor Dr Peter A Sy specialises in AI ethics and governance, data privacy, research ethics and ethical issues in health and digital technologies. He will highlight the ethical and governance challenges in deploying AI in healthcare, focusing on how to prevent AI from exacerbating existing inequalities.



Dr Cormekki Whitley

Data.org, USA

Dr Cormekki Whitley is the Chief Operating Officer of data.org, bringing nearly 30 years of experience in nonprofit leadership. She oversees the organisation's operations, finance, HR, and programme implementation, while leading financial inclusion capacity-building initiatives across the United States and Asia Pacific. Previously, she served as Interim Executive Director and COO at the Center for Law and Social Policy (CLASP), where she secured major funding, strengthened operations, and advanced high-impact initiatives. Her expertise spans financial management, organisational development, fundraising, and change management.

Moderator



Professor Dr Sanjay Rampal

Universiti Malaya, Malaysia

Professor Dr Sanjay Rampal is the Executive Director of Research and Development at Universiti Malaya and Professor of Epidemiology and Public Health. Medically trained in India, he served in Malaysia's Ministry of Health before earning an MPH from Harvard and a PhD from Johns Hopkins. Since joining Universiti Malaya in 2005, Dr Rampal has advanced Malaysia's public health research capacity, focusing on the epidemiology and prevention of cardiovascular and metabolic diseases, cancer, and communicable diseases such as dengue. His methodological expertise spans research design, biostatistics, and causal inference. He has published 122 peer-reviewed papers (h-index: 38 WOS, 39 SCOPUS) and supervised over 65 postgraduate students.



Parallel Symposia 1

Migration and Health Justice: Shared Solutions for a Changing World

29 October 2025 | 1430 - 1600 hrs

KPPI Auditorium, Ground Floor, Kompleks Pengurusan Penyelidikan dan Inovasi, Universiti Malaya

As global migration intensifies amidst climate disruption, conflict, and widening inequalities, ensuring health justice for migrants has become an urgent planetary health imperative. Migrants face persistent barriers to health care, legal protection, and social inclusion—challenges exacerbated by intersecting crises and policy inaction. This symposium explores the structural determinants of migrant health disparities and the possibilities for transformative, rights-based responses.

Speakers



Professor Dr Brian J Hall

NYU Shanghai, China

Professor Dr Brian J Hall is an expert in global mental health, social epidemiology, and digital interventions, whose work includes large-scale studies on the health of migrant domestic workers and displaced communities in the Western Pacific.



Associate Professor Dr Natasha Howard

National University of Singapore/London School of Hygiene & Tropical Medicine

Associate Professor Dr Natasha Howard is a health systems and policy specialist with extensive experience in conflict-affected and humanitarian contexts, whose research integrates perspectives from displacement-affected populations to inform inclusive policy solutions.



Associate Professor Dr Tharani Loganathan

Universiti Malaya, Malaysia

Associate Professor Dr Tharani Loganathan is a Public Health Medicine Specialist whose research examines health system governance, migrant access to healthcare, and the social and political dimensions of health financing.



Dr Elizabeth Chong

IOM - UN Migration

Dr Elizabeth Chong is a results-driven public health professional and pharmacist with 7+ years of proven expertise in program development and implementation, health policy design, stakeholder engagement, and M&E, with a focus on migration health, TB, and health equity. Experienced in both national and regional roles across the US, Malaysia, and the Asia-Pacific, including within the UN and through direct engagement with ASEAN.

Moderator



Khaulah Fadzil

Khaulah Fadzil is a humanitarian affairs coordinator with Médecins Sans Frontières (MSF), an international medical humanitarian organization providing medical and humanitarian aid to people affected by conflict, epidemics, disasters, or exclusion from healthcare. With a Master's in Public Health (MMedSc.), Khaulah has worked with various communities in Lebanon, Sudan, Tanzania, Uganda, Bangladesh and in Malaysia through various roles with the Malaysian AIDS Foundation, UNHCR, the ICRC and MAHAR. With MSF, she coordinates national and regional advocacy on humanitarian issues; mainly on impartial humanitarian access in Myanmar, access to healthcare in the community and in detention and safe disembarkation of boats. She works by engaging various stakeholders from ASEAN, key ministries, religious leaders, parliamentarians, CBOs and NGOs. Khaulah Fadzil is a fellow of the Equity Initiative Southeast Asia and the Atlantic Fellows for Health Equity (Southeast Asia). Her training in public health guides her work in for a more equitable society.

Parallel Symposia 2

Global Health Ethics & Justice: Bridging Gaps in Care, Access, and Policy

29 October 2025 | 1430 - 1600 hrs

IAS Auditorium, Ground Floor, Block B, Institute for Advanced Studies, Universiti Malaya

As global health systems confront increasingly complex challenges—including pandemics, climate change, resource scarcity, and deepening inequities—the ethical dimensions of global health have become ever more critical. This symposium explores how justice and equity are negotiated across diverse health systems and how structural imbalances continue to shape access, care, and collaboration. Grounded in the conference theme “Towards Planetary Health Equity: A Global Call for Shared Solutions,” the session brings together three expert voices to examine the ethical tensions and practical challenges in global health.

Speakers



Professor Dr Angus Dawson

National University of Singapore, Singapore

Professor Dr Angus Dawson will open the session with a critical reflection on the ethical imperatives of decolonising global health. He will explore how deeply embedded power structures, historical legacies, and institutional biases continue to shape global health research, governance, and collaborations, particularly between high-income countries (HICs) and low- and middle-income countries (LMICs). His talk will address the need for ethical reorientation in how priorities are set, knowledge is valued, and partnerships are formed.



Associate Professor Dr Sharon Kaur

Universiti Malaya, Malaysia

Associate Professor Dr Sharon Kaur will offer a grounded perspective from the Global South, exploring how LMICs experience and navigate global health initiatives. Drawing on ethical and policy insights from the region, she will reflect on the implications of externally driven programs and what justice means for communities on the receiving end of global health interventions.



Datuk Dr Kalaiarasu M Peariasamy

SEGi University and Colleges, Malaysia

Datuk Dr Kalaiarasu M Peariasamy is a Consultant Paediatric Dentist and former Director of the Institute for Clinical Research, NIH Malaysia. He currently serves as a Senior Lecturer at SEGi University and an Adjunct Professor at Taylor’s School of Medicine. His expertise includes paediatric oral surgery, dental traumatology, cleft dentistry, and clinical research. He is a graduate of the University of London and the Royal Colleges of Surgeons of Edinburgh, England, and Glasgow.



Professor Dr Frederick (Rick) L. Altice

Yale School of Medicine, USA

Dr Frederick (Rick) L. Altice is a Professor of Medicine, Epidemiology, and Public Health at Yale University. His work focuses on the intersection of infectious diseases and addiction, particularly HIV, tuberculosis, and substance use disorders. Through global collaborations in Malaysia, Ukraine, Peru, and beyond, he integrates biomedical, behavioural, and digital health approaches to improve patient care. He also directs two International Implementation Science Research and Training Centres with Universiti Malaya and Sichuan University, building global capacity for evidence-based interventions.

Moderator



Dr Nishakanthi Gopalan

Universiti Malaya, Malaysia

Dr Nishakanthi Gopalan is a Senior Lecturer at the Medical Humanities and Ethics Unit, Faculty of Medicine, Universiti Malaya. With a PhD in research ethics and policy, she coordinates the Master of Health Research Ethics (MOHRE) programme and serves on the UMMC Medical Research Ethics Committee. Her work focuses on bioethics, clinical ethics, and neuroethics in emerging technologies and health research.



Parallel Symposia 3

Climate Change and the Global Disease Burden: Emerging Health Threats in a Warming World

29 October 2025 | 1430 - 1600 hrs

IAS Seminar Room, Ground Floor, Block C, Institute of Advanced Studies, Universiti Malaya

Climate change is reshaping the global disease burden, amplifying threats from vector-borne and waterborne diseases, heat-related illnesses, food insecurity, and environmental degradation. This symposium explores the urgent need for climate-resilient health systems and proactive, equity-oriented public health responses that integrate environmental and health agendas.

Speakers



Dr Rohaida Ismail

Ministry of Health, Malaysia

Dr Rohaida Ismail leads the Environmental Health Research Centre at the Institute for Medical Research. A Public Health Medicine Specialist with expertise in environmental health and climate change, she contributes to Malaysia's national strategies on climate adaptation, children's environmental health, and human biomonitoring.



Dr Anna Thorson

WHO-TDR / The Special Programme for Research and Training in Tropical Diseases

Dr Anna Thorson is the Head of the Research Capacity Strengthening Unit at TDR, WHO, and Professor of Global Infectious Disease Epidemiology at Karolinska Institutet. With extensive experience in implementation research, capacity building, and digital health, she will highlight global research strategies for addressing climate-sensitive infectious diseases and building resilient systems through interdisciplinary collaboration.



Professor Dr Rafdzah Ahmad Zaki

Universiti Malaya, Malaysia

Professor Dr Rafdzah Ahmad Zaki is a distinguished Public Health Medicine Specialist with experience in Evidence-Based Medicine, infectious disease modelling and implementation science. Her leadership in research and public health education enables her to foster collaborations across disciplines and sectors to tackle the multifaceted impacts of climate change on health, building resilience in health systems by integrating expertise from epidemiology, environmental science, policy, and technology.



Dr Dang Thi Anh Thu

Hue University, Vietnam

Dr Dang Thi Anh Thu is the Vice-Dean of Public Health Faculty and Vice-Director of Hue University's Institute for Community Health Research. She has extensive experience working with international researchers to implement studies on various climate change-related public health threats. Her research focuses on environmental, community, and occupational health as well as health risk assessment.

Moderator



Professor Dr Tin Tin Su

Monash University, Malaysia

Professor Dr Tin Tin Su is a public health physician and researcher with over 20 years of experience, dedicated to improving population health through community engagement, social epidemiology, and implementation science. She is the Director of the South East Asia Community Observatory (SEACO) Health & Demographic Surveillance System (HDSS) and leads major research initiatives on climate change and health, including the eHealth at SEACO (CHIMES) project and the Wellcome Trust-funded study on heat and health in Southeast Asia. Professor Su also directs Monash University's Regional Hub for Asia Climate Change and Health (REACH) and has held leadership roles in the International Health Literacy Association (IHLA) and Asia Health Literacy Association (AHLA). Her research focuses on climate change, digital health, health literacy, community-based interventions, and implementation science.



Parallel Symposia 4

Bridging Climate Mitigation and Adaptation for Health Equity: Innovations, Policies, and Community Resilience

30 October 2025 | 0900 - 1030 hrs

KPPI Auditorium, Ground Floor, Kompleks Pengurusan Penyelidikan dan Inovasi, Universiti Malaya

Climate mitigation and adaptation are often pursued as separate policy domains, yet their convergence is essential to advancing planetary health and social equity. While mitigation seeks to reduce future climate harms, adaptation addresses present vulnerabilities—both are vital to protecting the health and well-being of marginalised populations who bear the brunt of environmental degradation and systemic injustice. This symposium examines the intersections between these climate strategies, with a focus on co-benefits for health equity, just transitions, and resilience-building.

Speakers



Dr Fong Chng Saun

Universiti Malaya, Malaysia

Dr Fong Chng Saun is an environmental scientist specialising in urban heat, air quality, and climate-health resilience in tropical cities. His research integrates microclimate modelling, community-based mitigation strategies, and planetary health education.



Mr Priyank Hirani

Data.org

Mr Priyank Hirani is a seasoned leader with over a decade of experience at the intersection of data, technology, and social impact. His work focuses on building inclusive, ethical, and locally responsive data ecosystems that serve marginalised communities. He has led multi-stakeholder initiatives involving governments, academia, civil society, and the private sector to strengthen capacity and foster innovation in data and AI for social good. With a proven track record in designing and scaling global networks, he promotes democratised data access and responsible data use. His expertise includes data governance, capacity building, and applying data for sustainable development.



Associate Professor Dr Renzo Guinto

SingHealth Duke-NUS Global Health Institute, Duke-NUS Medical School, National University of Singapore

Associate Professor Dr Renzo Guinto is a planetary health advocate and systems thinker whose research connects climate, health equity, and public health innovation across the Global South.

Moderator



Dr Bala Murali Sundram

Universiti Malaya, Malaysia

Dr Bala Murali Sundram is a Senior Lecturer in Occupational and Environmental Health at the Faculty of Medicine, Universiti Malaya. He holds an MPH and DrPH from UM, with research interests in occupational and environmental health, infectious disease epidemiology, and predictive analytics. Previously with Malaysia's Ministry of Health, he served as District Health Officer in Sabah and Head of Disease Surveillance in Johor, contributing to the national COVID-19 response and earning an Exemplary Service Award. He now leads research collaborations and contributes to climate and environmental health policy, while remaining active in national and international professional bodies.



Parallel Symposia 5

Towards Resilient Health Systems: Economic Policy and Governance Solutions

30 October 2025 | 0900 - 1030 hrs

IAS Auditorium, Ground Floor, Block B, Institute for Advanced Studies, Universiti Malaya

As global health systems struggle with the compounding effects of pandemics, economic instability, climate change, and widening social inequities, the imperative to build resilience has never been more urgent. But resilience is not simply the ability to withstand shocks; it is shaped by the underlying structures of governance, financing, and justice. To build systems that are not only robust in crisis but also equitable and sustainable in everyday function, we must understand how economic and policy frameworks influence both system capacity and health equity. This symposium explores how forward-looking governance and economic strategies can transform health systems into engines of resilience and inclusion.

Speakers



Dr Piya Hanvoravongchai

Saw Swee Hock School of Public Health, National University of Singapore, Singapore

Dr Piya Hanvoravongchai is a public health physician and health systems expert specialising in health policy, financing, and equity. Formerly Secretary-General of the National Health Foundation, Thailand, he has held academic positions at the London School of Hygiene and Tropical Medicine and Chulalongkorn University. As a founding Co-Director of the Equity Initiative, he has advised ministries of health and international agencies across Asia-Pacific on health systems strengthening and equitable healthcare access.



Dr Gan Saw Chien

ProtectHealth Corporation, Malaysia

Dr Gan Saw Chien is a public health physician and a key leader in reforming Malaysia's dual-sector health system. His talk, "Bridging the Public-Private Divide: Enhancing Sustainability in Malaysia's Health System through Strategic Purchasing from the Private Sector," explores how ProtectHealth's Strategic Purchasing initiatives strengthen health financing, engage private providers, and complement public healthcare services. His work focuses on advancing affordability, quality, and equity across Malaysia's health system.



Professor Dr Ajay Mahal

University of Melbourne, Australia

Professor Dr Ajay Mahal is an internationally recognised health economist with expertise in health financing, economic evaluation, and systems policy. His presentation, "Economic Policy and Health System Resilience: What Works and What Still Needs Fixing," will critically examine the role of economic policy in shaping resilient health systems, highlighting successes as well as persistent gaps in policy design and implementation. Drawing from experiences across low- and middle-income countries, he will offer insights into economic strategies that can strengthen performance and equity.

Moderator



Dr Ainol Haniza Kherul Anuwar

Universiti Malaya, Malaysia

Dr Ainol Haniza Kherul Anuwar is a Lecturer in the Department of Community Oral Health & Clinical Prevention, Faculty of Dentistry, Universiti Malaya. Formerly with Malaysia's Ministry of Health, she contributed to oral healthcare delivery and evidence-based clinical guideline development through the Health Technology Assessment Section. She holds a Doctorate and Master's in Dental Public Health from Universiti Malaya and a Bachelor of Dental Surgery from Universitas Gadjah Mada. Her research focuses on health economics, policy, and systems, particularly cost modelling and access to oral care among disadvantaged populations.



Parallel Symposia 6

Sustainable Solutions to Non-Communicable Diseases (NCD) Prevention

30 October 2025 | 0900 - 1030 hrs

IAS Seminar Room, Ground Floor, Block C, Institute of Advanced Studies, Universiti Malaya

Non-communicable diseases (NCDs) are a growing public health concern, driven by complex interactions between lifestyle, environment, and systemic factors. The symposium, "Sustainable Solutions to NCD Prevention," convenes leading experts to share evidence-based strategies and innovative approaches for addressing this pressing issue. One key focus is the exploration of human-environment interactions in shaping NCD risk. This includes examining how urbanisation, pollution, and food systems contribute to the growing burden of NCDs, underscoring the need for integrated policies and active community engagement. Another session highlights the application of behavioural insights to promote healthier choices at both individual and population levels, demonstrating how strategic changes in policy and the built environment can lead to meaningful improvements in health outcomes.

Speakers



Professor Dr Goh Hong Ching

Universiti Malaya, Malaysia

Professor Dr Goh Hong Ching is an interdisciplinary social scientist specialising in human-environment interactions, urban and regional planning, and sustainable tourism.



Dr Saiful Adli Suhaimi

Ministry of Health, Malaysia

Dr Saiful Adli Suhaimi is the Head of the Behavioural Insights Unit at the Institute for Health Behavioural Research, Ministry of Health, Malaysia. He specialises in applying behavioural science to improve health outcomes through evidence-based health communication, policy design, and intervention strategies.



Dr Say Yee How

Sunway University, Malaysia

Dr Say Yee How is a biomedical scientist with expertise in nutrigenetics, neurodegeneration, and neoplasm research.

Moderator



Professor Dr Noran Naqiah Hairi

Universiti Malaya, Malaysia

She is a public health expert and epidemiologist specialising in ageing, disability, and frailty. She leads the Prevent Elder Abuse and Neglect Initiative (PEACE), which has informed national policy and WHO collaborations on elder abuse prevention and assessment. During the COVID-19 pandemic, she spearheaded the development of over 500 science communication materials to improve health literacy and combat misinformation. Her work reflects a strong commitment to protecting vulnerable populations and advancing healthy ageing in Malaysia and beyond.



Parallel Symposia 7

Building Climate-Resilient Health Systems: Strategies for Sustainability, Justice and Equity

30 October 2025 | 1045 - 1215 hrs

KPPI Auditorium, Ground Floor, Kompleks Pengurusan Penyelidikan dan Inovasi, Universiti Malaya

Climate crisis is no longer a distant threat—it is a lived reality for health systems worldwide. Rising temperatures, extreme weather, and shifting disease patterns are placing unprecedented stress on healthcare infrastructure, frontline workers, and vulnerable populations. This symposium explores what it means to build climate-resilient health systems that are not only sustainable and adaptive but also just and inclusive.

Speakers



Professor Dr Shireen Anne Nah Han Yien

Universiti Malaya, Malaysia

Professor Dr Shireen Anne Nah Han Yien is a senior consultant paediatric surgeon and Head of UM@Green Health, whose work advocates for the greening of healthcare and systems-wide transformation toward environmental sustainability in health services.



Dr Mengieng Ung

National University of Singapore, Singapore

Dr Mengieng Ung is a Research Fellow at the SingHealth Duke-NUS Global Health Institute, Duke-NUS Medical School, National University of Singapore. She holds a PhD in Geography (Health) from the University of Western Ontario, Canada, and has extensive research experience in the fields of climate change, sustainability, and global health. Her scholarly interests encompass health literacy, eHealth, maternal and child health, and infectious disease control, with particular emphasis on the application of geographic information systems (GIS) and mixed-method research in public health studies. Dr Ung's research explores the interlinkages between environmental change, population health, and social determinants of well-being, with a regional focus on Southeast Asia. She has contributed to numerous international collaborative projects and published widely in peer-reviewed journals such as Reproductive Health, International Journal of Environmental Research and Public Health, and Climate and Development.



Associate Professor Dr Chris Fook Sheng Ng

University of Tokyo, Japan

Associate Professor Dr Chris Fook Sheng Ng is based at the Department of Global Health Policy, Graduate School of Medicine, University of Tokyo. His research focuses on environmental epidemiology, with particular emphasis on the health impacts of air pollution and atmospheric exposures such as wildfire smoke, desert dust, and temperature. He also specializes in the application of environmental statistics to advance understanding of these complex relationships.

Moderator



Dr Fong Chng Saun

Universiti Malaya, Malaysia

Dr Fong Chng Saun is an environmental scientist specialising in urban heat, air quality, and climate-health resilience in tropical cities. His research integrates microclimate modelling, community-based mitigation strategies, and planetary health education.



Parallel Symposia 8

Technology & Global Health Education

30 October 2025 | 1045 - 1215 hrs

IAS Auditorium, Ground Floor, Block B, Institute for Advanced Studies, Universiti Malaya

As the global health landscape grows increasingly complex, innovative technologies are reshaping how we educate and equip future health professionals. This symposium explores the transformative role of digital platforms, simulation tools, and learner-centred pedagogies in enhancing global health education and capacity-building. Presenters will highlight how these innovations can foster accessible, compassionate, and context-responsive training across diverse settings.

Speakers



Associate Professor Dr Lee Yew Kong

Universiti Malaya, Malaysia

Associate Professor Dr Lee Yew Kong is the lead of eLearning at the Faculty of Medicine, Universiti Malaya, where he has developed a range of eLearning tools, including reusable learning objects for evidence-based medicine and virtual patients for use in Malaysia and Indonesia.



Dr Catherine Zhou

Hong Kong University of Science and Technology

Dr Catherine Zhou is a computer scientist and educator, focuses on research postgraduate education, academic integrity, and student mental health. Her teaching and research interests include research integrity and ethics, and RPg students' mental health. She is in charge of the RPg student professional development program within the School of Engineering.



Dr Ann Toh

National University Singapore, Singapore

Dr Ann Toh is a home hospice physician and clinician-educator passionate about compassion-based education. She is actively involved in shaping undergraduate curriculum in the areas of community-based education for social determinants of health, social accountability, interprofessional education, and compassion training.

Moderator



Dr Lim Sin How

Universiti Malaya

Dr. Lim Sin How is a Senior Lecturer at the Department of Social and Preventive Medicine, Faculty of Medicine, Universiti Malaya. He holds a Ph.D. in Epidemiology from the University of Pittsburgh, an MSHCA from the University of New Haven, and a BSc from the National University of Singapore. His research focuses on HIV/STI prevention among key populations, particularly men who have sex with men (MSM), including areas such as chemsex and drug use. He has published widely in international journals with international funding support and has led several HIV prevention and care projects among Asian MSM. Dr. Lim also serves as a consultant, project leader, external reviewer, and invited speaker at international conferences.



Parallel Symposia 9

One Health Approach to Tropical Diseases

30 October 2025 | 1045 - 1215 hrs

IAS Seminar Room, Ground Floor, Block C, Institute for Advanced Studies, Universiti Malaya

Tropical diseases, many of which are zoonotic or environmentally driven, underscore the need for a unified, cross-sectoral approach to health. This symposium highlights the One Health framework, which integrates human, animal, and environmental health disciplines to prevent, detect, and respond to emerging infectious threats in tropical regions. It focuses on transdisciplinary collaboration and community-based strategies to build health resilience in vulnerable settings.

Speakers



Dr Ho Ai Chia

Sarawak State Health Department, Malaysia

Dr Ho Ai Chia is a Public Health Consultant Physician, currently serving in the Sarawak Health Department under the Ministry of Health Malaysia. Dr Ho is a graduate of the Epidemic Intelligence Program (EIP) Malaysia and currently a technical supervisor and trainer for EIP. Dr Ho has been involved in the management of the rabies outbreak in Sarawak, including direct involvement at ground zero during the start of the outbreak in 2017. Currently, she is also the Sectional Head for the Communicable Disease Control Section in the Sarawak Health Department, in charge of the rabies outbreak management in Sarawak from a human health perspective. She is one of the technical experts in the strategic planning for rabies control in Sarawak and Malaysia.



Dr Thura Kyaw

SEAOHUN

Dr Thura Kyaw is a medical doctor and public health professional with over ten years of experience advancing One Health and health systems initiatives in Southeast Asia. As the Regional Program Manager at the Southeast Asia One Health University Network (SEAOHUN), he leads programs that strengthen cross-sectoral collaboration and workforce development under the One Health approach. He has successfully overseen the rollout of SEAOHUN's regional online learning platform, expanding access to training across multiple countries. His expertise spans One Health, health systems strengthening, communicable diseases, and community health. A strong advocate for knowledge sharing and collaboration, Dr. Kyaw continues to drive efforts that enhance regional preparedness and resilience against infectious diseases and emerging health threats.



Professor Dr Mas Ayu Said

Universiti Malaya, Malaysia

Professor Dr Mas Ayu Said is a Professor of Epidemiology at the Department of Social and Preventive Medicine, Faculty of Medicine, Universiti Malaya, and a consultant epidemiologist at the University Malaya Medical Centre. Her research focuses on mental health, psychopharmacology, and the metabolic side effects of schizophrenia treatment. She also studies alcohol use and psychosocial factors related to substance use in Malaysia. In addition, she conducts research on vector-borne diseases such as dengue and chikungunya, including collaborative work with Umeå University on dengue early warning systems and public responses to prevention initiatives.

Moderator



Professor Dr Rafdzah Ahmad Zaki

Universiti Malaya, Malaysia

Professor Dr Rafdzah Ahmad Zaki is a distinguished Public Health Medicine Specialist with experience in Evidence-Based Medicine, infectious disease modelling and implementation science. Her leadership in research and public health education enables her to foster collaborations across disciplines and sectors to tackle the multifaceted impacts of climate change on health, building resilience in health systems by integrating expertise from epidemiology, environmental science, policy, and technology.



Pre-Conference Workshop 1

Preparing Health Systems for the Future of AI for Health: Ethical Challenges and Lesson Learned

28 October 2025 | 0900 - 1630 hrs

IAS Seminar Room, Ground Floor, Block C, Institute for Advanced Studies, Universiti Malaya

Artificial Intelligence (AI) is reshaping health research and practice — from early disease detection and diagnosis to personalised care, risk prediction, and large-scale community data analysis. Yet, as these technologies accelerate, they bring complex ethical challenges: data privacy, patient safety, algorithmic bias, transparency, equitable access, and even the risk of digital colonialism.

About the Workshop

This interactive workshop brings together regional experts, policymakers, and researchers to co-develop a framework for ethical digitalisation of health information systems in Asia-Pacific economies — adaptable to diverse contexts worldwide.

Participants will explore how to:

- Ensure ethical governance in AI-driven health systems
- Strengthen data equity and inclusiveness across fragmented systems
- Learn from global experiences to avoid repeating digital missteps
- Identify best practices and safeguards for responsible AI in health research

Through expert presentations and roundtable discussions, we'll leverage the interdisciplinary and cross-cultural strengths of the APRU network to shape a regional consensus statement on the ethical use of AI in health.

Why Join?

- Gain insights from global thought leaders in AI ethics and digital governance
- Contribute to the development of actionable policy frameworks for the region
- Network with professionals shaping the future of ethical digital health
- Be part of a movement toward responsible, inclusive, and equitable AI in health systems

Domains and Discussion Points



Ethical principles from a Pacific Rim perspective

A shared set of values keeps decisions consistent across very different health systems in the region. Principles like “do no harm”, fairness, respect for persons, and accountability help us decide when AI belongs in care—and when it doesn't. Clear values also guide tough choices when benefits and risks are finely balanced. They should work for both big urban hospitals and rural clinics with limited resources.

- What values must we never compromise?
- When is it acceptable to say “no” to an AI tool?
- How do we balance benefit vs harm fairly for different settings?
- Who decides on rare exceptions, and how?



Consent, privacy and data rights

Patients should understand what they're agreeing to, in language they can follow, and be able to change their minds later. Privacy isn't a nice-to-have; it is core to trust, especially when data move across organisations or borders. People should know what is collected, why, for how long, and who can see it. Simple processes must exist to view, correct, or delete data where appropriate.

- How do we make consent meaningful, not just a tick box?
- What data should never be shared or sold?
- What happens if someone withdraws consent?
- How can patients see, correct, or delete their data?



Fairness, bias and inclusion

AI must serve everyone, including small or historically overlooked groups. If the data under-represent a community, the system may perform worse for them—and that is an ethical failure. We need routine checks for uneven error rates and plans to fix them. Public reporting (where safe) helps keep us honest and builds confidence.

- Does the tool (the AI) work equally well for all groups?
- How will we spot and correct unfair results?
- What if some groups are missing from the data?
- What should we report publicly about fairness?



Safety and clinical responsibility

Patient safety comes first, always. AI can support decisions, but humans remain responsible for care and outcomes. Clear rules are needed for testing, go-live, and what to do when things go wrong—up to and including an immediate rollback. Learning from incidents should be fast, blame-aware, and focused on improvement.

- Who is responsible if a patient is harmed?
- What warning signs trigger a pause or rollback?
- How do we test updates before patients see them?
- How are incidents reported and turned into learning?



Transparency and explainability

People deserve to know when AI is used, what it does well, and where it is limited. Explanations should be honest and understandable, with more detail available for clinicians who need it. Clear labelling prevents “invisible AI” in care pathways. Basic facts—intended use, training data sources, and limitations—should not be hidden.

- What must clinicians and patients be told, in plain language?
- What information about the model must be public?
- When is a simple explanation enough—and when isn't it?
- How do we label AI use clearly in care?



Governance and oversight

Good governance sets the rules of the road: who approves AI, who monitors it, and who can stop it. Oversight must be independent enough to challenge poor decisions, yet close enough to act quickly. Conflicts of interest must be declared and managed. Documented decisions allow audits and protect patients and staff.

- Who approves, monitors, and can stop an AI system?
- How do we manage conflicts of interest?
- What records prove decisions were ethical?
- How do we involve ethics committees early, not late?



Interoperability and security (as ethical duties)

Unsafe connections and weak security put patients at risk, even if the model is good. Minimum standards for data formats, APIs, identity, logging, and audit trails are ethical safeguards, not mere IT details. Designs should work in low-connectivity or offline settings so no one is left behind. Vendors must prove they meet these basics before deployment.

- What “minimum safe” standards are required to connect systems?
- How do we protect identity, logs, and audit trails?
- How do we keep care safe in low-resource or offline settings?
- Who checks that vendors meet these safeguards?



Evidence, validity and performance over time

An AI system proven elsewhere may not work the same in our population. Local testing before first use is essential, and regular checks are needed as patients, practice and data shift. We should track meaningful outcomes: better health, fewer harms, and fair access—not just accuracy scores. Sometimes the ethical choice is to retrain, restrict, or retire a model.

- What proof is needed before first use here?
- How will we detect drift and re-test on a schedule?
- Which outcomes (benefit, harm, equity) must we track?
- When do we retire or retrain a model?



Ethical procurement and vendor obligations

Contracts should turn ethics into enforceable duties. They must set limits on data use and intellectual property, require transparency, and tie service levels to safety and equity—not only uptime. Vendors should support updates responsibly and plan for end-of-life without trapping the health system. Penalties for broken promises protect patients and the public.

- Which terms lock in safety, transparency, and support?
- What limits apply to data use and intellectual property?
- Which service levels link to safety and equity?
- What penalties apply if promises are broken?



Public voice, trust and capacity building

AI in health works best when people are involved and staff are prepared. Communities should have a say in how tools are chosen and used. Clinicians and managers need training to use AI safely and to explain it clearly. Sharing lessons across the region helps everyone move faster and avoid repeating mistakes.

- How do we involve patients and communities in decisions?
- What training do clinicians and staff need now?
- How do we explain benefits and risks simply?
- How can countries share lessons across the region?



Featured Speakers



Dr Mellissa Withers
Program Director of Global Health Program

Dr Mellissa Withers is a Professor and Director of Pedagogical Enrichment and Training in the Department of Population and Public Health Sciences at the University of Southern California's Keck School of Medicine, and the Director of the APRU Global Health Program. Her work focuses on global health, women's empowerment, migrant and mental health, and community-based research. With a PhD in Community Health Sciences from UCLA, she brings rich international experience, having lived and conducted research across several countries, and continues to inspire through her global perspective and passion for cultural understanding.



Dr Peter Sy
Assistant Vice President for Digital Transformation, University of the Philippines

Dr Peter Sy is a leading philosopher and ethicist. Dr Sy advises the Philippine Departments of Health and Science & Technology on eHealth privacy and governance. His expertise spans AI ethics, research ethics, and open data, and he co-founded the UP Social Innovations Lab.



Dr Hannah Yee-Fen Lim
Associate Professor, Nanyang Technological University (NTU), Singapore

Dr Hannah Yee-Fen Lim is a world-renowned authority in AI and law, Dr Lim has advised the World Health Organisation and led multimillion-dollar research on AI governance, digital ethics, and data law. Her groundbreaking work has influenced global frameworks for AI in healthcare and smart cities.



Dr Vivek Jason Jayaraj
Deputy Director (Analytics & Informatics), Digital Health Division, Ministry of Health Malaysia

Dr Vivek Jason Jayaraj is a public health physician and data scientist, Dr Jayaraj drives Malaysia's digital health strategy. His work in predictive analytics, COVID-19 forecasting, and precision health reflects a vision of data-driven public health with empathy and impact.



Dr Cormekki Whitley
Chief Operating Officer, Data.org, USA

Bringing nearly 30 years of experience in nonprofit leadership, Dr Cormekki Whitley oversees the organisation's operations, finance, HR, and programme implementation, while leading financial inclusion capacity-building initiatives across the United States and Asia Pacific. Previously, she served as Interim Executive Director and COO at the Centre for Law and Social Policy (CLASP), where she secured major funding, strengthened operations, and advanced high-impact initiatives. Her expertise spans financial management, organisational development, fundraising, and change management. Passionate about equity and inclusion, Cormekki also contributes her skills as a board and committee member for organisations such as Volunteers of America and Code for Science & Society. She holds a degree in accounting from NC State University and advanced degrees from Meredith College and Northcentral University.



Christina Schönleber
Chief Strategy Officer at APRU

Christina Schönleber, Chief Strategy Officer at APRU is responsible for the direction of APRU's strategic priority of informing policy development on solutions to Asia Pacific challenges and the development of APRU's research-related program areas. As Head of Knowledge Exchange at the Royal College of Art in London, she developed and implemented the RCA's strategy for Knowledge Exchange and set up key industrial and third-party collaborations with major international corporations such as Tata Consultancy Services and Visa Europe. As Assistant Director of the University of Kent's Innovation and Enterprise Department, Christina Schönleber led the University's Knowledge Exchange development in key areas related to science and social science.



Dr Sanjay Rampal Lekhraj Rampal

Executive Director of Research Development, Universiti Malaya, Malaysia

Dr Sanjay Rampal Lekhraj Rampal is a Professor of Epidemiology and Public Health Physician. He also heads the Western Pacific Regional Training Centre, which is supported by the Special Programme for Research and Training in Tropical Diseases (TDR). Medically trained in India, he served in Malaysia's Ministry of Health before earning a Master of Public Health from Harvard University and a PhD from Johns Hopkins University. He is Certified in Public Health (CPH) by the US National Board of Public Health Examiners. Dr Rampal aims to drive transformative growth in research and education within public health. He seeks to improve the nation's health by focusing on the prevention of cardiovascular and metabolic diseases, as well as their intersection with cancer and certain communicable diseases. Dr Rampal is dedicated to advancing public health through excellence in research, education, and collaborative leadership.



Dr Eleni Dimokidis

Head of Healthcare Technology for Asia Pacific and Japan, Amazon Web Services (AWS)

Dr Eleni Dimokidis drives healthcare technology innovation and nationwide digital transformation in collaboration with Ministries of Health and governments. With multidisciplinary expertise spanning technology, law, and life sciences, she holds a PhD in Regenerative Medicine and multiple advanced degrees in Bioengineering, Nanotechnology, Law, and Computer Science. Her work covers key areas including digital health, AI, genomics, telemedicine, and bioinformatics, advancing AWS's mission to strengthen healthcare systems and improve patient outcomes across the region.



Dr Jonathan Guillemot

Universidad San Francisco de Quito

Dr Jonathan Guillemot is the Director of the Institute of Social Medicine and Global Challenges, Universidad San Francisco de Quito. Jonathan R. Guillemot holds a PhD in Global Health, Social Medicine, and Gerontology from King's College London (United Kingdom). Beginning his academic journey with undergraduate and graduate degrees in Political Sociology at the Université de Lille (France), he worked as an analyst in Health Economics in London (United Kingdom) for close to a decade before joining Universidad San Francisco de Quito. Currently, he serves as the Associate Dean of the School of Medicine, where he is also the Director of the Institute of Social Medicine & Global Challenges and a full-time associate professor. His teaching portfolio includes subjects such as Ageing and Later Life, Sociology of Health, and Clinical Ethics. Dr Guillemot engages in research and community outreach projects in the areas of Gerontology and Research Pedagogy, integrating initiatives such as One Health.





Pre-conference Workshop 1 Agenda

0900 - 1000 hrs	Registration
1000 - 1015 hrs	Welcome & Introductions (Christina Schönleber, APRU)
1015 - 1040 hrs	Plenary 1 - Peter Sy (University of the Philippines)
1040 - 1105 hrs	Plenary 2 - Hannah Yee-Fen Lim (Nanyang Technological University, Singapore)
1105 - 1130 hrs	Plenary 3 - Vivek Jason Jayaraj (Ministry of Health, Malaysia)
1130 - 1215 hrs	Cross-stakeholder Panel Discussion Speakers: Cormekki Whitley (Data.org) & Eleni Dimokidis (AWS) Moderator: Sanjay Rampal
1215 - 1245 hrs	Round-table Briefing and Group Assignment
1245 - 1345 hrs	Lunch
1345 - 1530 hrs	Round-table Discussions
1530 - 1615 hrs	Plenary Report back & Live Editing of Consensus Draft
1615 - 1630 hrs	Closing Remarks and Next Steps





Pre-Conference Workshop 2

Implementation Science for All: Advancing Equity and Access in Health

28 October 2025 | 0830 - 1700 hrs

IAS Auditorium, Ground Floor, Block B, Institute for Advanced Studies, Universiti Malaya

Implementation science helps bridge the gap between research and real-world impact—but its benefits often don't reach everyone equally. This pre-conference creates a space for new voices, practical tools, and shared learning, focusing on how implementation science can truly serve people across diverse countries, cultures, and systems.

Participants will explore how to:

- Embed equity in study design and research frameworks
- Use digital tools to close access gaps
- Learn from both high- and low-resource settings
- Foster genuine collaboration across the Asia-Pacific

This hands-on, inclusive event combines workshops, peer-led sessions, and panels that invite honest dialogue. Held just before APRU 2025, it supports the network's mission of equity, sustainability, and shared solutions—an opportunity to listen, learn, and co-create fairer approaches to health.

Featured Speakers



Professor Dato' Dr Yang Faridah Abdul Aziz
Dean, Faculty of Medicine, Universiti Malaya

Professor Dato' Dr Yang Faridah Abdul Aziz is a distinguished academic professor and consultant radiologist. Prof Yang is also a former chair of the Medical Education Committee at the Malaysian Medical Council, known for her specialised clinical services and research in cardiac imaging.



Dr Sanjay Rampal Lekhraj Rampal
Executive Director of Research Development, Universiti Malaya

Dr Sanjay Rampal Lekhraj Rampal is a distinguished Public Health Medical Specialist and Professor of Epidemiology at Universiti Malaya. He is a respected authority known for his significant contributions to public health and for holding several leadership positions within academia.



Professor Dr Victor CW Hoe
Head, Department of Social and Preventive Medicine, Faculty of Medicine, Universiti Malaya

Professor Dr Victor Hoe is a professor of occupational and public health. As an occupational physician, he also heads the university's Occupational Safety, Health and Environmental Unit (OSHE) and the Centre for Occupational and Environmental Health.



Professor Dr Frederick (Rick) L. Altice
Yale School of Medicine, USA

Rick Altice is a professor of Medicine, Epidemiology, and Public Health at Yale University, and an expert in infectious diseases and addiction medicine. His work focuses on the intersection of diseases like HIV, viral hepatitis, and tuberculosis with substance use disorders, particularly among vulnerable populations such as incarcerated individuals. Altice conducts global health research and has developed integrated healthcare programs in countries including Malaysia, Ukraine, and Peru.



Dr Anna Thorson

WHO-TDR / The Special Programme for Research and Training in Tropical Diseases

Dr Anna Thorson is the Head of the Research Capacity Strengthening Unit at TDR, WHO, and Professor of Global Infectious Disease Epidemiology at Karolinska Institutet. With extensive experience in implementation research, capacity building, and digital health, she will highlight global research strategies for addressing climate-sensitive infectious diseases and building resilient systems through interdisciplinary collaboration.



Professor Dr Rafdzah Ahmad Zaki

Universiti Malaya, Malaysia

Professor Dr Rafdzah Ahmad Zaki is a distinguished Public Health Medicine Specialist with experience in Evidence-Based Medicine, infectious disease modelling and implementation science. Her leadership in research and public health education enables her to foster collaborations across disciplines and sectors to tackle the multifaceted impacts of climate change on health, building resilience in health systems by integrating expertise from epidemiology, environmental science, policy, and technology.



Dr Claudia Abreu Lopes

United Nations University International Institute for Global Health (UNU-IIGH)

Dr Claudia Abreu Lopes is a Policy Research Lead who has over two decades of experience in academia and has held positions at prestigious institutions like the University of Cambridge and the London School of Economics.



Dr Rumana Akhter Saifi

Universiti Malaya, Malaysia

Dr Rumana Akhter Saifi is a Senior Lecturer at the Department of Social and Preventive Medicine, Faculty of Medicine, Universiti Malaya. Her research applies social and epidemiological approaches to design effective public health interventions. Dr Rumana Saifi worked extensively with disadvantaged populations across the Asia-Pacific.



Dr Howie Lim Sin How

Universiti Malaya, Malaysia

Dr Howie Lim is a Senior Lecturer at the Department of Social and Preventive Medicine, Faculty of Medicine, Universiti Malaya. His research focuses on HIV and STI prevention among key populations, particularly men who have sex with men (MSM). Dr Howie Lim has extensive expertise in areas like chemsex and drug use related to HIV risk.



Dr Nur Afiqah Mohd Salleh

Universiti Malaya, Malaysia

Dr Nur Afiqah is a Senior Lecturer in the Department of Social and Preventive Medicine, Faculty of Medicine, Universiti Malaya. She serves as the Vice President at the Malaysian AIDS Council. Her research and advocacy focus on harm reduction for people who use drugs, as well as HIV and Hepatitis C.



Dr Remco Van de Pas

United Nations University International Institute for Global Health (UNU-IIGH)

Dr Remco Van de Pas is a Policy Research Lead for the Climate Justice and Determinants of Health work package. His work also focuses on global health policy, health systems governance, and the political economy of health.



Mr Raymond Tai

PT Foundation (formerly Pink Triangle), Malaysia

Mr Raymond Tai has been leading PT Foundation (formerly Pink Triangle) in Malaysia, serving in roles such as Marketing and Communications Director and Acting Chief Operations Officer. For decades, he was instrumental in its work of providing HIV/AIDS awareness, education, and support services. His efforts were crucial in supporting the gay and wider community in Malaysia at a time of significant stigma and ignorance.

Pre-conference Workshop 2 Agenda

0830 – 0900 hrs	Registration and Morning Tea
0900 – 0930 hrs	Opening Remarks by the Dean and the Head of Department
0930 – 1015 hrs	Plenary 1 – Equity in Action: Advancing Health Through Implementation Science by Professor Dr Rick Altice
1015 – 1045 hrs	Keynote Speech – What Counts as Implementation Research? Defining the Boundaries by Professor Dr Rafdzah Ahmad Zaki
1045 – 1115 hrs	Spotlight Session – How digital transformation can dismantle inequity in Implementation Research? Evidence from resource-limited and resource-abundant countries by Dr Rumana Saifi
1115 – 1145 hrs	Tea Break and Networking
1145 – 1225 hrs	Panel Discussion – Who Owns Implementation Science? Elevate voices from underrepresented communities and LMIC contexts Panel: <ul style="list-style-type: none"> • Dr Claudia Abreu Lopes • Raymond Tai • Dr Nasyrah Iskandar Moderator: <ul style="list-style-type: none"> • Dr Nur Afiqah Mohd Salleh
1225 – 1330 hrs	Lunch Break
1330 – 1430 hrs	Skills Building Workshop Room 1: Decolonizing Planetary Health Research and Implementation led by Remco Van de Pas. Room 2: Unpacking Bundled Implementation Strategies – An Introduction to Flowcharts, Nominal Group Techniques and Qualitative Research Techniques, led by Professor Dr Rick Altice, Dr Rumana Saifi, and Dr Ang Swee.
1430 – 1530 hrs	Interactive Workshop Room 1: Bridge implementation science with policy change—how do we push equity-oriented interventions upstream? Led by Professor Dr Rafdzah Ahmad Zaki and Remco Van de Pas Room 2: Decolonizing Planetary Health Research and Implementation, led by Dr Claudia Abreu Lopes
1530 – 1610 hrs	Closing Panel: “The Future of Implementation Science is Equitable” Reflections from researchers, community scholars, and global experts, led by Professor Dr Rick Altice, Dr Anna Thorson, and Professor Dr Sanjay Rampal.
1615 – 1630 hrs	Closing Remarks by Professor Dr Rick Altice.

Conference Working Group Sessions

As part of the 18th APRU Global Health Conference in Kuala Lumpur, all participants are invited to join one of six dynamic two-hour Working Group sessions. These sessions provide an opportunity for in-depth dialogue, co-creation, and regional collaboration on some of the most pressing issues shaping global health in the Asia-Pacific.

Each Working Group brings together leading experts, practitioners, and participants from diverse disciplines to:

- ▶ **Examine critical challenges** across health, ethics, humanitarian practice, education, and equity.
- ▶ **Share knowledge and experiences** from across the Asia-Pacific network.
- ▶ **Generate actionable outputs**, ranging from consensus statements and declarations to frameworks and teaching tools that will guide research, policy, and practice.

The six sessions span a broad spectrum of global health concerns:



AGEING

30 October 2025 | 1400 - 1600 hrs

KPPI Auditorium, Ground Floor, Kompleks Pengurusan Penyelidikan dan Inovasi, Universiti Malaya

Combatting Ageism in the Asia-Pacific

Ageism—or discrimination based on age—remains a pervasive and often overlooked barrier to inclusion and equity across the Asia-Pacific region. As Asia-Pacific societies rapidly age, addressing ageism is both a moral and practical imperative. Combatting ageism is critical for healthy ageing and for building inclusive, resilient societies that recognise the value of older adults as contributors to economic, social, and intergenerational wellbeing. This workshop, led by Professors Zhaoli Dai-Keller, Jonathan Guillemot, and Andrew Sixsmith, will explore how ageism manifests across systems, institutions, and cultures in the region, both in overt and more subtle ways. Participants will engage in collaborative roundtables to co-develop recommendations for addressing ageism at individual, family, community, institutional, and policy levels. The Social Ecological Model will be used as a framework. Utilising the collective expertise of the APRU network and the guidance from the UN Decade on Healthy Ageing, we aim to produce a consensus statement outlining guiding principles and actionable strategies to promote age equity across Asia-Pacific societies.



BIOETHICS, EDUCATION AND TECHNOLOGY

30 October 2025 | 1400 - 1600 hrs

IAS Auditorium, Ground Floor, Block B, Institute for Advanced Studies, Universiti Malaya

Case Studies on the Ethics of AI for Health

In this interactive session, we will join two Working Groups (Bioethics and Education and Technology) to further the conversation on the ethics of artificial intelligence (AI) in health. The leaders are Catherine Zhou from Hong Kong University of Science and Technology and Leander Marquez from the University of the Philippines. Participants will collaboratively develop/expand short case studies focused on ethical issues in the use of AI in health. Through guided discussions in small groups, participants will explore real-world scenarios and challenges related to privacy, bias, accountability, informed consent, and other ethical dilemmas present in the use of AI-driven health care and research. The session aims to generate practical, thought-provoking case studies that can be used as teaching and training tools for students, practitioners, and policymakers working at the intersection of AI and health ethics.



HUMANITARIAN ASSISTANCE AND HEALTH

30 October 2025 | 1400 - 1600 hrs

IAS Cube 2, 4th Floor, Block D, Institute for Advanced Studies, Universiti Malaya

A Call & Commitment to Humanity: APRU GH Humanitarian Aid and Health Declaration on Humanitarian Crises

Political shifts can halt donor-funded humanitarian assistance. These changes interrupt critical services, slow emergency response, weaken resilience, disrupt data collection in crisis zones, and ultimately impact human well-being while straining global partnerships. This interactive session—led by Ann Toh and Suhyoon Choi, and Shuaibu Musa—seeks to uncover opportunity and hope by reimagining humanitarian practice. We will explore challenges and spotlight “positive deviants” who innovate despite resource constraints and discuss how science and evidence can guide action in data-scarce contexts. The workshop culminates with the presentation of a draft APRU Declaration on Humanitarian Crises, inviting participants to share experiences, insights, and case studies to finalise a shared ethical commitment that advances community resilience, local leadership, global solidarity, and the spirit of our shared humanity.



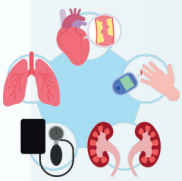
MENTAL HEALTH

30 October 2025 | 1400 - 1600 hrs

IAS Seminar Room, Ground Floor, Block C, Institute for Advanced Studies, Universiti Malaya

Addressing the Student Mental Health Crisis in Asia-Pacific Higher Education

Many Asia-Pacific economies are facing unprecedented mental health crises among youth and young adults. In this interactive session led by Xin (Summer) Xu, we will begin by discussing the diverse mental health needs of university students. We will share the results of a recent survey of APRU member institutions, which took inventory of the types of programmes and services offered by APRU universities, as well as the gaps and challenges that universities face in meeting the increasing demand for mental health services. Drawing on these findings, we will highlight key insights and share examples of innovative and/or effective initiatives that may serve as models for other universities seeking to enhance student mental health services. These programmes reflect a continuum of care, spanning prevention, early intervention, and treatment. In addition to examining direct service provision, we will consider how the broader institutional environment—including academic policies, campus culture, and student engagement—can play a critical role in fostering student mental well-being. The session will conclude with a collaborative discussion to generate actionable recommendations, which will inform the development of a white paper outlining promising, multi-level approaches for promoting holistic mental health support within higher education institutions across the region.



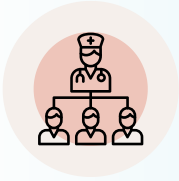
NCDs

30 October 2025 | 1400 - 1600 hrs

IAS Research Nest, Ground Floor, Block D, Institute for Advanced Studies, Universiti Malaya

Advancing Equity in Women’s Cancer Prevention: The Kuala Lumpur Declaration for the Asia-Pacific Region

This workshop, led by Claire Chenweng Zhong and Jason Huang, aims to promote equity in women’s cancer prevention across the Asia-Pacific region. It addresses the increasing incidence of women’s cancers and the persistent gender disparities in prevention and care. Experts will lead discussions to identify key challenges, knowledge gaps, and effective strategies to enhance access to resources and services for women. The findings will aim to be published in a peer-reviewed journal to inform future public health policies and advance gender equity in cancer prevention.



NURSING

30 October 2025 | 1400 - 1600 hrs

IAS Cube 1, 4th Floor, Block D, Institute for Advanced Studies, Universiti Malaya

Redesigning Nursing Education for Future Healthcare Systems

With health systems changing quickly in response to demographic forces, technological innovation, global pandemics, and climate change, the need to revolutionise nursing education has never been more urgent. During this roundtable discussion led by Erlinda Palaganas, we will highlight shared educational challenges and examine new paradigms of nursing education, attuned to future health system requirements and international health priorities. Participants will discuss best practices in curriculum redesign, simulation-based education, interprofessional education, digital and AI integration, and how global competencies and sustainability values can be embedded in nursing programmes. The session will also examine APRU member universities' internationalisation of nursing education through faculty exchange, collaborative research, and regional accreditation arrangements. The end goal is to produce a joint framework for transforming nursing education that includes recommendations for creating culturally aware and technology-literate nurses.

To facilitate meaningful participation, an invitation to select a preferred Working Group will be sent to all registered participants one month before the conference. This ensures that participants can plan ahead, contribute actively, and join discussions most aligned with their expertise and interests.

Together, these Working Groups underscore APRU's commitment to regional solutions, interdisciplinary collaboration, and global solidarity. Participants are encouraged to actively engage, contribute their expertise, and shape outputs that will have enduring impact on health and wellbeing in the Asia-Pacific and beyond.





Student-led Forum - Youth Power in Planetary Health

From Campus Idea to Global Action

Join young changemakers from across the Asia-Pacific as they explore how student-led initiatives are transforming ideas into real-world impact. This Student-Led Forum celebrates youth leadership in driving solutions for climate resilience, environmental sustainability, and health equity, showing how campus innovation can spark global action for a healthier planet.

31 October 2025 | 0830 - 0930 hrs

KPPI Auditorium, Ground Floor, Kompleks Pengurusan Penyelidikan dan Inovasi, Universiti Malaya

Speakers



Shuaibu Saidu Musa

Shuaibu Saidu Musa serves as a Programme Manager, Expansion Strategy at Global Health Focus (Africa). He leads the organisation's outreach strategy for the Global Health Emerging Leaders Programme. He is a Registered Nurse from Nigeria and a master's student at Chulalongkorn University, Bangkok, Thailand (focusing on healthy longevity medicine). Mr Shuaibu is an Associate Editor; UNIVERSITAS: The official Journal of the University of Makati, Philippines. His interests span Clinical Epidemiology, Planetary Health and Global Health.



Eleanor J. Ong

Eleanor J. Ong is the Director of The Greenhouse Community Services and a PhD Research Scholar at the Saw Swee Hock School of Public Health, National University of Singapore. She bridges community practice and academic research in her work on mental health equity and substance use among marginalised populations. Her research and advocacy emphasise trauma-informed approaches, participatory methodologies, and community-academic partnerships to promote sustainable and equitable health interventions.



Xiaoyu Duan

Xiaoyu Duan is an MSPH student in Global Disease Epidemiology and Control at the Johns Hopkins Bloomberg School of Public Health, and is also affiliated with the Center for Global Health Equity at New York University Shanghai. His research focuses on ageing, sleep, and chronic disease, and he has experience in health economics and real-world data analysis. Passionate about bridging epidemiology and policy, Xiaoyu aims to promote healthier ageing populations worldwide.



Dantzel Tiakia

Dantzel Tiakia is a Māori and Niuean doctoral candidate at the University of Auckland's Te Poutoko Ora a Kiwa - Centre for Pacific and Global Health. With ancestral ties to Ngāti Wai and Lakepa, Niue, she has a background in biomedical science and Pacific health research. Dantzel serves as the New Zealand project manager for the Pacific Mental Health Survey, collaborating with Pacific nations to address mental health disparities through research. Her PhD research focuses on the mental well-being of Niuean youth in Aotearoa NZ and Niue, aiming to inform culturally grounded health policies and inspire future Pacific researchers.

Moderator



Imran Azwan bin Azizan

Imran is a Medical Officer and Public Health specialist-in-training, thirteen years' experience; a UM DrPH candidate who completed a Malaysian AIDS Council internship on HIV self-testing. Previous leadership includes MOIC Klinik Kesihatan Labang, and Head CPRC (COVID-19), Head of Maternal and Child Health Unit and Head of Family Health Development Section in Bintulu Health Office.

Master of Ceremony



Ainulbariah binti Abd. Wahid

Ainulbariah is a first-year Doctor of Public Health (DrPH) candidate at the Universiti Malaya, who is passionate about building healthier and more sustainable cities. With a background in medicine and public health practice, she brings professional and community experience into her research on walkability and non-communicable diseases. She has been recognised with awards for outstanding service, including during the COVID-19 response.



APRU Global Health Faculty Ambassadors 2024-2025

APRU Global Health Faculty Ambassadors are recognized for the continued engagement and support of the APRU Global Health Program. They have been actively engaged in several programmatic efforts over at least three years, such as serving as guest speakers and judges for student competitions, recruiting students to participate in activities, leading in-person and virtual workshops, and co-teaching the APRU joint global health courses.

Along with the advisory group members and leaders of the Working Groups, we would like to express our deepest appreciation to the following people:

Nina T. Castillo-Carandang
University of the Philippines

Mary Ana Cordero Diaz
Tecnológico de Monterrey

Mariam Davtyan
University of Southern California

Angus Dawson
National University of Singapore

Varalakshmy Gokilavanan
Universiti Malaya

Nishakanthi Gopalan
Universiti Malaya

Indri Hapsari Susilowati
Universitas Indonesia

Euzebiusz Jamrozik
Monash University

Yinzi Jin
Peking University

Shubha Kumar
University of Southern California

Sierin Lim
Nanyang Technological University

Michael Antonio Mendoza
University of the Philippines

Ana Sofía Rodríguez Ylizaliturri
Tecnológico de Monterrey

Wipaporn Natalie Songtaweasin
Chulalongkorn University

Pramon Viwattanakulvanid
Chulalongkorn University

Tianxiao Zhang
Xi'an Jiaotong University



APRU Student Ambassadors 2025



Nicole Tang is a student at the University of Southern California where she graduated with a Bachelor's degree in Global Health with a minor in Foundations of Data Science. She is currently pursuing a MS in Public Health Data Science. She is passionate about the clarity that data analysis and visualization can bring to better understand the challenges and opportunities in public health initiatives, and how to better address the social, cultural, economic and environmental factors that underlie health inequities in both a local and global context. She has conducted research focusing on women's health in Kenya and road trauma and injury in Uganda with USC GRIT lab. She has also participated in various USC study programs in Medellín, Seoul, and Oxford. Off campus she has done internships with Keiro Senior Services, World War II Camp Wall, and Long Beach Health Department. On campus she was involved with Keck Student Ambassadors, Camp Kesem, and Nikkei Student Union.



Vihan Shah is an undergraduate student at the University of California, San Diego, majoring in Human Biology, with a minor in Business/Finance. He attained the prestigious rank of Eagle Scout within the Boy Scouts of America, a testament to his leadership, commitment, and perseverance. Vihan previously interned at Simcha Therapeutics, where he leveraged his analytical mindset and communication skills to support the company's mission of developing novel immunotherapies. He is currently involved in translational oncology research at the University of California, San Francisco, where he contributes to a team investigating the intersection of cancer biology and immunology. He has also taken on the role of Finance Chair of UC San Diego's Competitive Bollywood Fusion Dance Team, UCSD Zor, where he is responsible for fundraising efforts, including securing up to \$30,000 annually to ensure the successful execution of the team's season, while coordinating logistical expenses with the internal and external board.



Eliza Nations is a junior at the University of Southern California, majoring in Health Promotion and Disease Prevention. Growing up in Italy, Japan, and Guam, she developed a strong interest in culturally responsive care and primary prevention. Outside the classroom, Eliza works as an Emergency Medical Technician (EMT) and is passionate about gastroenterology, with a focus on Inflammatory Bowel Disease (IBD).

Undergraduate

- ▶ **Maritza Andreeanne Rafa Ayusha** from the Universitas Indonesia for the poster titled “Value or Luxury? Cost-Effectiveness of Lipid-Lowering Therapies in Indonesia: A Cost-Effectiveness Analysis”.
- ▶ **Chan Ning Long** from The Chinese University of Hong Kong for the poster titled “Association between sociodemographic factors and HIV knowledge among Hong Kong citizens: a cross-sectional study”.
- ▶ **Joseph Mary L. Manalili** from Angeles University Foundation for the poster titled “Lugud Matwa (Filial Love): Exploring Resilience in Caregiver Roles among Kapampangan Families”.

Graduate

- ▶ **Ryan Chow** from The Chinese University of Hong Kong for the poster titled “Comparative Effectiveness of Anti-Obesity Medications on Body Weight and Glycemic Control in Overweight/Obese Adults with Type 2 Diabetes: Systematic Review and Network Meta-Analysis of Randomized Controlled Trials”.
- ▶ **Eleanor J. Ong** from the National University of Singapore for the poster titled “Substance use behaviours among sexual and gender minorities (SGM) with a history of adverse childhood experiences: a systematic review and meta-synthesis”
- ▶ **Ashis Talukder** from Australia National University for the poster titled “Urbanization and Double Burden of Malnutrition at the Household Level in South and Southeast Asia: Insights from Night-Time Lights Data”.

A huge thank you to our international panel of judges:

- ▶ Nina Castillo Carandang (U Philippines), King Chow (HKUST), Mariam Davtyan (USC), Jonathan Guillemot (USFQ), Indri Hapsari Susilowati (U of Indonesia), Budi Haryanto (U of Indonesia), Jiayan Huang (Fudan), Masamine Jimba (Tokyo), Lim Sin How (UM), Vivian WY Lee (CUHK), Judith McCool (Auckland), Juhwan Oh (Seoul National), Palaganas (U Phillipines), Manuel Pérez Jiménez (Tecnológico de Monterrey), Taninee Sahakitrungruang (Chulalongkorn), Mellissa Withers (USC), Martin Wong (CUHK), Benjamin Zhou (APRU), and Catherine Zhou (HKUST).



Finalists of the APRU Global Health Virtual Case Competition

Team Sustainabite



Team Sustainabite
Universitas Indonesia

APRU Global Health Case 2025 Team Sustainabite

https://www.youtube.com/watch?v=ru3bt22_cy0&list=PLDSdjTa0QuTEnhdfe-qvCFF4WeCCA7gGM&index=1

Team SEED



Team SEED
Chinese University of Hong Kong

ARPU-SEED

<https://www.youtube.com/watch?v=xAsLrImp2Nk>

Team HeaLink



Team HeaLink
University of Indonesia

Strengthening Food Availability in Indonesia Through the Integration of Field Data and AI | APRU

<https://www.youtube.com/watch?si=ey43llh4A5VptVc5&v=CnL-WuO70XI&feature=youtu.be>

A huge thank you to our team of judges:

Muhammad Daniel Azlan Bin Mahadzir (Duke NUS), Alex Phang Kean Chang (Malaya), Suhyoon Choi (NUS), Kong Chow (HKUST), Janelle Gifford (Sydney), Nishakanthi Goplan (Malaya), Renzo Guinto (Duke NUS), Jiayan Huang (Fudan), Junjie (Jason) Huang (CUHK), Vivek Jason Jayaraj (Malaya), Paul Korir (Data.org), Shubha Kumar (USC), Jeff Lee (Malaya), Jia Li (FAO), Yee Fen Lim (Nanyang Tec), Alexander Atro Lopez (UPhilippines), Leander Marquez (UPhilippines), Maria de Jesus Medina Arellano (UNAM), Michael Antonio Mendoza (UPhilippines), Mu Li (Sydney), Erlinda Palaganas (UPhilippines), Ricardo Peña Silva (Universidad de los Andes), Manuel Pérez Jiménez (Tecnológico de Monterrey), Salome Antonette Rebello (NUS), Ana Sofía Rodríguez Ylizarituri (Tecnológico de Monterrey), Taninee Sahakitrungruang (Chulalongkorn), Gil Soriano (National University), Paul Teng Piang Siong (Nanyang Tec), Sneha Tuli (Microsoft), Pramon Viwattanakulvanid (Chulalongkorn), Mellissa Withers (USC), Yan Wang (UCLA), Cormekki Whitley (Data.org), Martin Wong (CUHK), Xin (Summer) Xu (Zhejiang), Tianxiao Zhang (Xi'an Jiaotong), Catherine Zhou (HKUST), and Chenwen (Claire) Zhong (CUHK).

APRU Global Health Conference 2025

Towards Planetary Health Equity: A Global Call for Shared Solutions



Supported by



Meet in Malaysia
BE Greater, Together.



About the Conference



Universiti Malaya, Kuala Lumpur, Malaysia

The **18th APRU Global Health Conference 2025**, co-hosted by the Department of Social and Preventive Medicine, Faculty of Medicine, Universiti Malaya, and the Association of Pacific Rim Universities takes place from **28th to 31st October 2025**, at the **Universiti Malaya, Kuala Lumpur, Malaysia**.

This year's conference theme, "**Towards Planetary Health Equity: A Global Call for Shared Solutions,**" underscores the urgent need for interdisciplinary, collaborative action to address the intertwined challenges of health, climate change, and social equity.

The conference brings together nearly 400 Public Health delegates from around the world!



Conference Venue



Universiti Malaya (UM), Malaysia's premier university, located in Kuala Lumpur. Established in 1905, UM combines historical charm with modern academic facilities, creating a dynamic environment for intellectual exchange. The university is situated within a lush, green campus renowned for its abundant greenery, tranquil gardens, and peaceful walkways. This serene setting provides delegates with an inspiring and refreshing atmosphere ideal for thoughtful discussions, meaningful collaborations, and productive networking throughout the conference.

The conference utilizes UM's state-of-the-art lecture halls and auditoriums, surrounded by lush greenery, fostering both academic collaboration and networking opportunities. Participants will enjoy easy access to vibrant city attractions, excellent transport connections, and diverse local cultural experiences, making UM an ideal venue for international delegates to convene and advance global health discussions.

Getting to KPPI Building, Universiti Malaya

There is a regular bus service that connects the Universiti Malaya (UM) campus with the rest of the city throughout the day, but note that bus services may be less frequent during the evenings, on Sundays, and on public holidays.

Travelling by LRT

Take the Kelana Jaya Line and alight at Universiti LRT Station. From there, you can take a short Grab ride or the RapidKL feeder bus (T789) into Universiti Malaya. Ask to be dropped off at the KPPI (IPPP) Building, located near Dewan Budaya and Kolej Kediaman Tuanku Kurshiah (KK3). The ride takes about 5-10 minutes.

Travelling by MRT

Take the MRT Kajang Line and alight at Phileo Damansara Station. From there, use Grab or a taxi to enter Universiti Malaya via the Main Gate (Jalan Universiti). The KPPI/IPPP Building is within the main campus, near Dewan Budaya. The journey takes about 10-15 minutes, depending on traffic.



Travelling by Taxis or Ride-hailing services

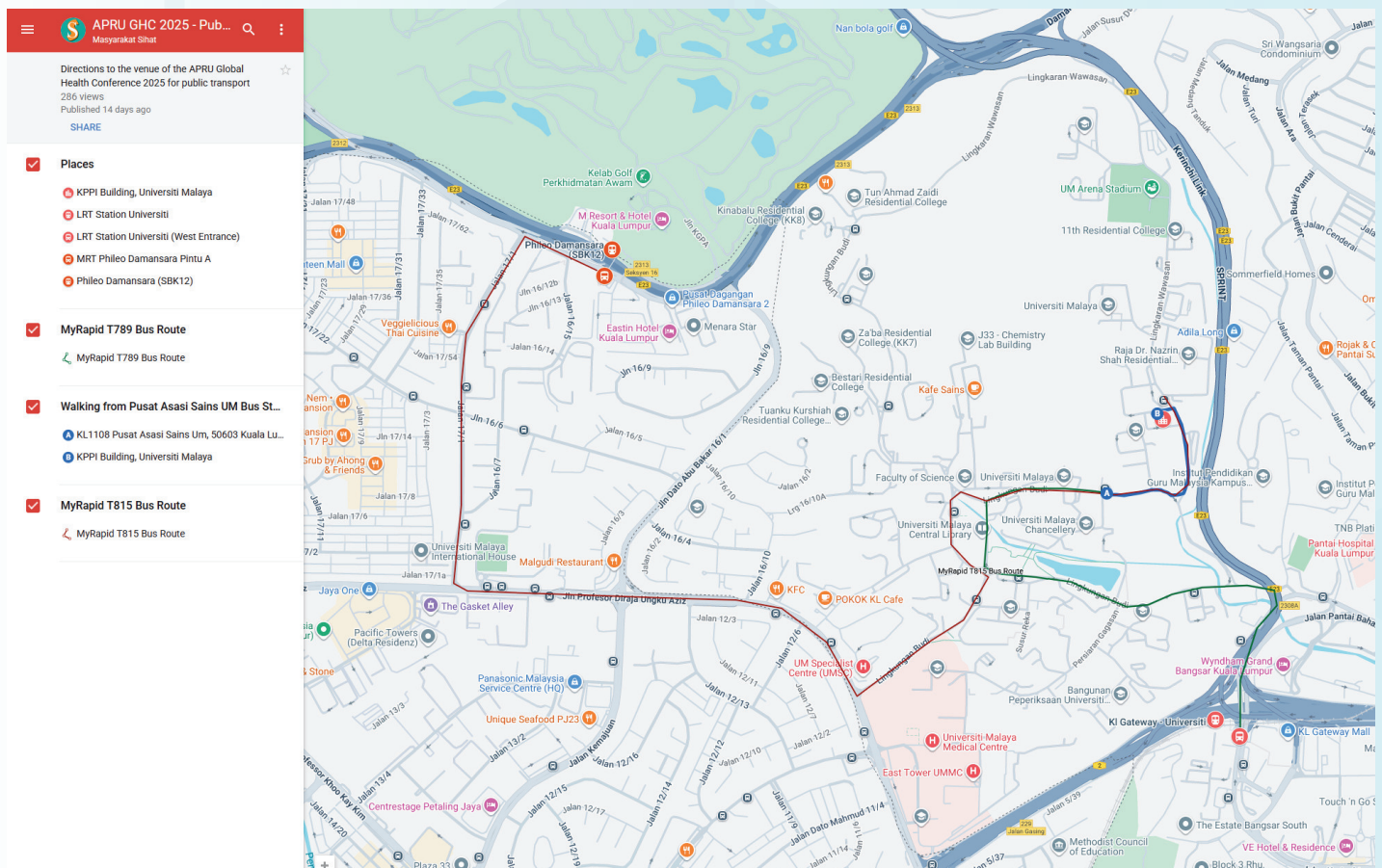
You may travel to the conference venue by taking either taxis or ride-hailing services. There are many ride-hailing services in Malaysia, e.g., Grab, inDriver, Maxim, AirAsia Move, and Lalamove (avoid using unregistered ride-hailing services). When travelling by taxi or ride-hailing services, choose your destination as “KPPI Building (IPPP), Universiti Malaya.” As you enter through the Main Gate (Jalan Universiti), you will need to go straight past the roundabout, and follow signs to Dewan Budaya. The KPPI/IPPP Building is located just beyond Dewan Budaya, beside Kolej Kediaman Tuanku Kurshiah (KK3). The driver can drop you off directly at the main entrance.

Travelling by Private Vehicle

You can also come to the campus with your own vehicle. However, there are only limited parking spaces near the KPPI Building.

APRU GHC 2025 - Public Transport Interactive Map

<https://aprughc2025.um.edu.my/getting-to-kppi-building-universiti-malaya/>



Oral Presentation Schedule

Day 1

OP1 - Migration Health

29 October 2025 | 1600 - 1700 hrs

KPPI Auditorium, Ground Floor, Kompleks Pengurusan Penyelidikan dan Inovasi, Universiti Malaya

Time	ID	Title	Presenter
1600 - 1610	141	Health System Interventions for Migrants and Displaced Populations in a Changing Climate: A Global Systematic Review	Tanisha Naqvi
1610 - 1620	56	Adolescent Elopement in Child Marriage Contexts: Counter-Narratives of Resistance, Relief, and Risk from Rohingya Refugee Youth in Malaysia	Ong Zhen Ling
1620 - 1630	65	Mental Health Disparities by Sex: Unravelling Determinants and Changes during the Resettlement Process	Meng Zheng
1630 - 1640	72	Acculturation, Social Support, and Outpatient Care Use Among Indonesian Migrant Workers in Malaysia: A Cross-Sectional Study	Amirah Zafirah Zaini
1640 - 1650	96	Awareness and Utilisation of Health and Long-Term Care Services among Elderly Immigrants in Japan	Mai Fujii
1650 - 1700	112	Employers' perceptions, practices, and relational dynamics in migrant domestic work in Macao, China: A qualitative study	Timothy S Sumerlin

OP2 - Global Health Workforces, Bioethics & Antimicrobial

29 October 2025 | 1600 - 1700 hrs

IAS Auditorium, Ground Floor, Block B, Institute for Advanced Studies, Universiti Malaya

Time	ID	Title	Presenter
1600 - 1610	52	Capacitating Local Government Units for Improved Health Outcomes: A Tri-Sectoral Collaboration Model for Health Leadership Development in the Philippines	Philip Jerome A. Flores
1610 - 1620	234	Socio-demographic profile and knowledge, attitude, and skills on Palliative and Hospice Care among nurses in Metro Manila	Edmar Elcarte
1620 - 1630	153	Assessment of One Health Core Competencies Among Malaysian One Health Workforce	Muslimah bt Ithnin
1630 - 1640	265	Political Competency in Nursing: A Concept Analysis	Gilbert Jr Bernardino
1640 - 1650	222	Association Between Organisational Support, Job Satisfaction and Turnover Intention Among Malaysian Healthcare Worker	Ruthashini R Selvasingam
1650 - 1700	229	Muntingia calabura-Copper Oxide Nanoparticles (M. calabura-CuO NPs): An Anti-Biofilm Agent Against Pseudomonas aeruginosa	Luis Alfonso M. Policarpio

OP3 - Climate Change & Health

29 October 2025 | 1600 - 1700 hrs

IAS Seminar Room, Ground Floor, Block C, Institute for Advanced Studies, Universiti Malaya

Time	ID	Title	Presenter
1600 - 1610	11	Post-Super Typhoon Odette: Exploring Health System Challenges and Adaptation Strategies on Halian Island, Philippines	Kirchelle Ann Mae E. Nodado
1610 - 1620	41	Extreme Heat and Gender-Based Violence: A Systematic Review of the Evidence	Isabelle Rowan Pearson
1620 - 1630	87	Carbon and economic savings from reducing low-value care: Case of appendicitis in Thailand	Nishanta Sharma
1630 - 1640	227	Blood lead levels among children in Southeast Asia and mechanisms for routine BLL surveillance: rapid review	Nicola Suyin Pocock
1640 - 1650	75	Environmental Health Priorities for Climate Change Adaptation: New Practical Efforts to Reduce the Environmental Burden of Disease in Asia	Ai Tashiro
1650 - 1700	84	The Impact of Particulate Matter on COPD Exacerbation: A Retrospective Study from Teaching Hospital University of Sumatera Utara Medan, Indonesia	Andika Pradana

OP4 - Artificial Intelligence and Healthcare & Indigenous Health

29 October 2025 | 1600 - 1700 hrs

IAS Research Nest, Ground Floor, Block D, Institute for Advanced Studies, Universiti Malaya

Time	ID	Title	Presenter
1600 - 1610	111	Machine Learning Model Enhances Predictive Capability of Modified Early Warning System (MEWS)	Ku Yu Pin
1610 - 1620	232	Digital Health Equity in Action: Evaluating an AI Chatbot for HIV Prevention in Malaysian MSM	Rumana Akhter Saifi
1620 - 1630	258	The Role of AI and Digital Technologies in Access to Diagnostics in Crisis-Prone Areas: A Case from Myanmar Border Areas in Thailand	Claudia Abreu Lopes
1630 - 1640	91	More Than Connected: Rethinking Global Health through Indigenous Relationality	Meylin Zink Yi
1640 - 1650	95	Traditional health care and herbal medicine use among the Karen people: A case study of Ban Mae Lan Kham, Samoeng District, Chiang Mai Province	Suwichan Phatthanaphraivan
1650 - 1700	161	Challenges in Assessing Malnutrition and Anaemia Among Orang Asli Children Under Five in Rural Peninsular Malaysia	Mohamad Borhanuddin Helmy Bin Zanail

Day 2

OP5 - Climate Change & Health

30 October 2025 | 0800 - 0900 hrs

KPPI Auditorium, Ground Floor, Kompleks Pengurusan Penyelidikan dan Inovasi, Universiti Malaya

Time	ID	Title	Presenter
0810 - 0820	102	Use of Data in Policies at the Nexus of Climate and Health	Wissawa Malakan
0820 - 0830	124	Environmental Footprint of Dialysis in Thailand: A Life Cycle Assessment to Inform Green Health Policy	Wilasinee Samniang
0830 - 0840	137	Assessing Hospital Executives' Awareness of Climate Change and Proposing Sustainable Strategies: Survey-Based Approaches	Phantira Saphankaew
0840 - 0850	146	A Personalised Air Quality monitoring Approach to Support Asthma Control in an Environment Affected by Air Pollution	Chitsanupong Ratarat
0850 - 0900	147	Daily temperature effects on children respiratory hospitalization in Malaysia	Vera Ling Hui Phung

OP6 - Health Systems & UHC

30 October 2025 | 0800 - 0900 hrs

IAS Auditorium, Ground Floor, Block B, Institute for Advanced Studies, Universiti Malaya

Time	ID	Title	Presenter
0800 - 0810	22	Prioritising over 85 million disabilities in universal health coverage in China: Situation, progress and challenges	Yanan Luo
0810 - 0820	24	Strengthening DOH Regional Core Teams in North Luzon Philippines: How the Bayang Malusog Program Empowers Health Leaders to Accelerate Universal Health Coverage	Catherine Chung
0820 - 0830	30	Early Lessons from Financial Integration in Batangas and Quezon: Advancing Universal Health Coverage in the Philippines	Ma. Ysabel Leanne Padilla Brual
0830 - 0840	38	Strengthening the Global Supply of Medical Products through South-South and Triangular Cooperation: China's Dual Role in LLIN Provision for Malaria Prevention in Africa under the Health Silk Road Initiative	Hanbin Wang
0840 - 0850	45	Understanding patient satisfaction in virtual outpatient care: Insights from a statewide survey in Australia	Zhaoli Dai-Keller
0850 - 0900	55	The Correlation Between Confidence, Complacency, and Convenience as Factors of Pentavalent Vaccine Hesitancy: A Descriptive-Correlational Study Among Filipino Mothers	Rovic Gene O. Duque

OP7 - Non-Communicable Diseases (NCDs)

30 October 2025 | 0800 - 0900 hrs

IAS Seminar Room, Ground Floor, Block C, Institute for Advanced Studies, Universiti Malaya

Time	ID	Title	Presenter
0800 - 0810	133	Uncovering Smoking Patterns and Influencing Factors Among Women in Indonesia: Insights from the 2021 GATS Data	Nina Rini Suprobo
0810 - 0820	51	Associations between Globalisation Index and Cancer Burden: a global analysis	Junjie Huang
0820 - 0830	68	Community-Based Thyroid Screening Program: A Primary Care Experience in Pampanga, Philippines	Arthur Zablan Gallo
0830 - 0840	82	The Relationship of Light Physical Activity on Overall Well-being Among Older Persons in Metro Manila	Maree Yzabela M. Santos
0840 - 0850	100	Confidence Over Cognition: A Cross-Sectional Study on Healthcare Professionals' Engagement in Brief Tobacco Cessation Interventions in Malaysian Primary Care	Mohd Faris Mahmud
0850 - 0900	205	Exploring Health Identity Transformation in Type 2 Diabetes Mellitus	Ketsaraphon Sennok

OP8 - Global Health Education and Technology

30 October 2025 | 0800 - 0900 hrs

IAS Research Next, Ground Floor, Block D, Institute for Advanced Studies, Universiti Malaya

Time	ID	Title	Presenter
0800 - 0810	236	The Theory and Practice of Sustainable Resilience in Public Health Programs	Ellen Fitzpatrick
0810 - 0820	47	Assessing the Impact of Essential Surgical Care Training on Emergency Surgical Service Delivery in Ghana: Evidence from Interrupted Time Series Analysis in the Upper East Region	Gillian Pogsuglo Bogee
0820 - 0830	152	Bridging the Gap: Enhancing Drug Allergy Knowledge and Management Confidence in Non-Allergist Physicians with ADAPT-2 - a multinational, AI-assisted, educational initiative	Hugo W.F. Mak
0830 - 0840	180	Health Literacy Profile of Current and Future Healthcare Professionals: Bruneian Context	Norhanani Nadzirah Binti Haji Md Taib
0840 - 0850	235	YouTube as a Source of Health Information on Dengue: A Cross-Sectional Observational Study	Reuben Victor Laguitan
0850 - 0900	114	Empowering University students on tackling global health Issues	Ying Chau

OP19 - Bioethics & Climate Change

30 October 2025 | 0800 - 0900 hrs

IAS Cube 2, 4th Floor, Block D, Institute for Advanced Studies, Universiti Malaya

Time	ID	Title	Presenter
0800 - 0810	245	What Do We Really Mean by Decolonisation in Bioethics? A Normative Proposal from the Global South	Joshua Cedric Aquino Gundayao
0810 - 0820	103	Delineating "familial influence" in clinical research: When is it "due" or "undue"?	Patrick Foo Kar Fai
0820 - 0830	139	Decision-Making for Children's Participation in Research: Perspectives of Malaysian Children and Their Parents	Lui Sze Chiang
0830 - 0840	81	Reclaiming Narratives in Global Health: Knowledge as Resistance in the Documentation of Health in Palestine During Genocide (2023-2025)	Rizma Adlia Syakurah
0840 - 0850	160	Empowering Farmers as Agents of Change for Planetary Health: A Participation Action Research among Honey Guava Farmers in Indonesia	Eka Lestari Mahyuni

OP9 - Climate Change & Health

30 October 2025 | 1615 - 1715 hrs

KPPI Auditorium, Ground Floor, Kompleks Pengurusan Penyelidikan dan Inovasi, Universiti Malaya

Time	ID	Title	Presenter
1615- 1625	44	Climate change and health: Emerging consensus at the WHO and the UNFCCC-COP	Yasushi Katsuma
1625- 1635	186	Planetary Health Education: Transforming Medical Students' Environmental Competence	Maria Lee Hooi Sean
1635- 1645	221	Modifying Effect of Particulate Matter (PM10) on associations of ambient temperature on cause-specific mortality in Klang Valley	Muhammad Alfatih Bin Pahrol
1645- 1655	64	A Study on Urban Resilience Building under the Context of Climate Change: Integrating the Indicator Frameworks of the SDGs and ISO 37123	Yi-li Lin
1655- 1705	218	School-Time Exposure to Ambient PM2.5 in Thailand: A Nationwide Spatiotemporal Analysis	KaE Pinpairoh Kitamura
1705- 1715	62	Impacts of mercury exposure on human reproductive health	Mengwei Yuan

OP10 - Migration & Health

30 October 2025 | 1615 - 1715 hrs

IAS Auditorium, Ground Floor, Block B, Institute for Advanced Studies, Universiti Malaya

Time	ID	Title	Presenter
1615-1625	132	Maternal, newborn and child health service delivery for Myanmar migrants along the Thailand-Myanmar Border from an implementation science perspective	Zin Nwe Win
1625-1635	136	Using systems thinking to understand maternal, newborn and child health service delivery for Myanmar migrants along the Thailand-Myanmar Border	Brandon Chua Wen Bing
1635-1645	168	Beyond the Workday: Exploring Mental Health and Well-being Among Indonesian Migrant Domestic Workers in Older Adult Care Roles	Andrian Liem
1645-1655	225	Stranded and Overlooked": A Systematic Review of the Multi-dimensional Impact of COVID-19 on Non-Domestic Migrant Workers in the ASEAN Region	Mukda Pratheepwatana wong
1655-1705	264	The languages of care: Experiences of immigrant speakers of seven mother tongues in the Canadian perinatal healthcare system	Celina G. Solis Becerra
1705-1715	39	Hidden Harm: A Qualitative Study on the Health and Well-being of Child Domestic Workers in Myanmar	Aye Thiri Kyaw

OP11 - Communicable Disease

30 October 2025 | 1615 - 1715 hrs

IAS Seminar Room, Ground Floor, Block C, Institute for Advanced Studies, Universiti Malaya

Time	ID	Title	Presenter
1615-1625	104	The Pandemic Agreement as a Legal Milestone for One Health: Significance and Challenges Ahead	Kentaro Nishimoto
1625-1635	121	RodentWatch as a smart integrated platform to raise awareness and control for advanced leptospirosis management	Sunna Vyatra Hutagalung
1635-1645	126	A whole-of-system approach to strengthening zoonotic disease preparedness in Singapore	Aysha Farwin
1645-1655	251	Trends and Climatic Drivers of Leptospirosis in Malaysia, 2012-2022: Spatiotemporal Analysis	Muhamad Fadhil Bin Mohd Pua'at Zuzaki
1655-1705	35	Dengue Fever: Awareness, Knowledge, Attitudes, and Practices of Urban Communities in the City of Santa Rosa, Laguna, Philippines	Aldrin Riel T. Boyano
1705-1715	26	Control of Tuberculosis Among Suspected Cases at a Machine Repair Service Company	Chyntia Ayu Andarini

OP12 - Mental Health

30 October 2025 | 1615 - 1715 hrs

IAS Research Nest, Ground Floor, Block D, Institute for Advanced Studies, Universiti Malaya

Time	ID	Title	Presenter
1615-1625	83	Pacific Mental Health National Survey Series: Samoa and Tonga	Dantzel Tiakia
1625-1635	86	Influence of Job Demands and Resources on Nurses' Compassion Fatigue: Mediating Roles of Self-Compassion, Resilient Coping, and Compassion Satisfaction	Tham Sin Wan
1635-1645	89	A Correlational Study on Psychological Adaptation Among Parents of Children with Asthma and Chronic Cardiovascular Diseases	Joseph Matthew M. Garcia
1645-1655	92	Through the Lens of Grief: A Phenomenological Study on Widowhood Among Middle-Aged and Older Adults	Jodie Maurizia T. Mendoza
1655-1705	101	Disparities in Adolescent Mental Toughness: Roles of Sociodemographics, Lifestyle, and Health Literacy	Claire Chenwen Zhong
1705-1715	174	Cultural adaptation of mental health assessment screening measures.	Judith McCool

OP13 - Global Health Nutrition

30 October 2025 | 1615 - 1715 hrs

IAS Cube 2, 4th Floor, Block D, Institute for Advanced Studies, Universiti Malaya

Time	ID	Title	Presenter
1615-1625	10	Beyond the Food Tray: Linking School Nutrition and Feeding Programs to Student Health and Academic Outcomes Through Health Literacy and Mental Health	Priscilla Adomako Gyasi
1625-1635	14	Nutritional Consequences of Cesarean Births: Exploring the Link to the Double Burden of Malnutrition in South and Southeast Asia	Ashis Talukder
1635-1645	18	Bridging Vertical Gaps: Integrating Deworming and Micronutrient Powders to Tackle Childhood Anaemia in Bangladesh	Haribondhu Sarma
1645-1655	36	Nutrition Leadership in Practice: A Governance Approach through the Pook Malusog Nutrition Governance Program of the Zuellig Family Foundation	Joyce Ann A. Viar
1655-1705	40	Prevalence and Risk Factors of Child Malnutrition in Climate-sensitive Coastal Regions, Bangladesh	Shuvagato Mondal
1705-1715	42	From Conflict to Care: Nutrition as a Dividend of Peace through Good Governance in Basilan	Jennifer Saipudin Nandu

OP14 - Family Health

30 October 2025 | 1715 - 1815 hrs

KPPI Auditorium, Ground Floor, Kompleks Pengurusan Penyelidikan dan Inovasi, Universiti Malaya

Time	ID	Title	Presenter
1715-1725	98	Design of a Community-Based Intervention to the Eradication of Female Genital Mutilation in Rural Tanzania: A Narrative Review and Evidence-Informed Framework	Hannah Lizeth Rodriguez Serrano
1725-1735	115	Intimate Partner Violence and Pregnancy Outcomes in Indonesia: Findings from the 2024 National Women's Life Experience Survey	Nohan Arum Romadlona
1735-1745	145	Improving Donor Human Milk Safety: Evaluation of Pre- and Post-Pasteurisation Controls in a Community-Based Human Milk Bank in the Philippines	Janella Ruth Y. Jerota
1745-1755	261	Filipino Mothers Assumed Roles on Essential Toddler Care: Implication on Universal Child Health Care	Nenita Baltazar Panaligan
1755-1805	85	The Effects of Skin-to-Skin Contact on Maternal Postnatal Attachment in Lying-in Clinics in Metro Manila	Andrea Mae Lagrimas Diaz

OP15 - UHC and Migration & Health

30 October 2025 | 1715 - 1815 hrs

IAS Auditorium, Ground Floor, Block B, Institute for Advanced Studies, Universiti Malaya

Time	ID	Title	Presenter
1715-1725	166	Experiences of occupational injuries and illness and their aftermath among migrant contract workers in Taiwan: A Qualitative Study	Yawen Cheng
1725-1735	154	Strengthening Primary Care Networks for Universal Health Coverage: An Evidence-Based Technical Assistance Approach Integrating Systems and Design Thinking	Helena Marie L. Alvior
1735-1745	182	Inequity in the utilisation of health services in Thailand due to the structural determinants of health: A systematic review	Vorawee Varavithya
1745-1755	268	Determinants of Cost Savings through Pooled Procurement: Evidence from Malaysia's Public Sector Medicines Pricing Initiative	Gopi Muniandy
1755-1805	179	Adapting to E-Health Systems: A Descriptive Qualitative Study on Nurses' Experiences in the Outpatient Department of a Private Hospital in the Philippines	Andrew James E. Cordoba
1805-1815	151	Antenatal Care Utilization Among Indonesian Youth: Evidence from the 2012 and 2017 Demographic Health Surveys	Anissa Ermasari

OP16 - Communicable Disease & Non-Communicable Diseases

30 October 2025 | 1715 - 1815 hrs

IAS Seminar Room, Ground Floor, Block C, Institute for Advanced Studies, Universiti Malaya

Time	ID	Title	Presenter
1715-1725	79	Cross-Country Inequalities in Disease Burden and Quality of Care of Tuberculosis, 1990-2021: A Systematic Analysis of the Global Burden of Disease Study 2021	Danni Li
1725-1735	122	Fragile Bubble of "Positive Living": An Ethnographic Study of Transitions of Status and Normalcy Among MSM Living with HIV in Urban Shanghai	Xiaoqing Xu
1735-1745	93	Synergistic Antimicrobial Potential of Lemongrass and Cuban Oregano: A Comparative Evaluation of Efficacy for Potential Disinfectant Use	Jesela Angeli R. Agas
1745-1755	233	Intersectional inequalities in body-mass index longitudinal trajectories among adults in SEACO, Malaysia	Aaron Koay Chee Cheng
1755-1805	266	The Determinants of Non-Alcoholic Fatty Liver Disease (NAFLD) among Adolescents in Peninsular Malaysia: A Longitudinal Closed Cohort Study	Vishnu Raj Savumthararaj

OP17 - Mental Health & Artificial Intelligence

30 October 2025 | 1715 - 1815 hrs

IAS Research Nest, Ground Floor, Block D, Institute for Advanced Studies, Universiti Malaya

Time	ID	Title	Presenter
1715-1725	183	Behavioural Nudges to Enhance Mental Health Help-Seeking Behaviour Among Secondary School Students - A Randomised Controlled Trial Protocol	Logeswary a/p Krisnan
1725-1735	189	Depression Status and Its Associated Factors among Middle Aged Women of Madhyabindu Municipality of Nawalpur District, Nepal	Ranjana Koirala
1735-1745	216	Listening Beyond Words: A Phenomenological Study on Parenting a Child with Autism	Julienne Arguelles Formeloza
1745-1755	256	Understanding Mental Health Literacy Among Pre-University Students in Malaysia: A Mixed Methods Protocol	Aziezah binti Norul Anhar
1755-1805	74	Urban Renewal Strategies in an Aging Society: Cross-Sectoral Integration of Architectural Design and Community-Based Healthcare	Yen Cheng-Fu

OP18 - Global Health Nutrition

30 October 2025 | 1715 - 1815 hrs

IAS Cube 2, 4th Floor, Block D, Institute for Advanced Studies, Universiti Malaya

Time	ID	Title	Presenter
1715-1725	46	Zuellig Family Foundation's First 1000 Days (F1KD) Nutrition Roadmap: A Governance-Driven Tool for Strengthening Local Health and Nutrition Systems	Rio Fe Garcia del Valle
1725-1735	76	Blessed Month? Effects of Prenatal Exposure to Ramadan on Muslims' Education in Malaysia	Jarud Romadan Bin Khalidi
1735-1745	77	The Effect of Extreme Weather Events and Undernutrition in Children Under Five Years Old in Asia: A Scoping Review	Fika Rizkyanti
1745-1755	97	Energy Intake, Diet Diversity, and Nutritional Status of Preschool-aged Orphans in Institutional Care: An Explanatory Sequential Study in Metropolitan Manila	Abigail Laurice R. Go
1755-1805	59	Digital Health Education for Food Literacy: Developing Content Creation Guidelines for Promoting Healthy Food Choices Among Youth in Sri Lanka	Fathima Sumaiya Mubarak

e-Poster Presentation Schedule

Session 1

29 October 2025 | 1225 - 1330 hrs

KPPI Gallery, Basement Level, Kompleks Pengurusan Penyelidikan dan Inovasi, Universiti Malaya

Panel 1 - Universal Health Coverage

Time	ID	Title	Presenter
1225-1230	49	The Sudden Surge In Lymphatic Filariasis Cases In Tuaran: A Chronology	Sathana Palani
1230-1235	53	Social Support and Quality of Life in Malaysian Dementia Care: A Systematic Literature Review	Maryam Kalhoro
1235-1240	71	Scaling up the Baby Friendly Hospital Initiative in support of maternal and newborn health: study protocol	Andini Pramono
1240-1245	88	Advancing Health Equity through China's Domestic HPV Vaccine Strategy: Progress and Structural Barriers	Jiayu Li
1245-1250	94	Implementing equitable integrated care for older adults: capacity assessment of Hong Kong's social care sector	Ruby Yu Ho Yan
1250-1255	159	Incidence and Factors Associated With Toddler Mortality in Malaysia from 2018 - 2022	Seetha a/p Selvaraju

Panel 2 - Mental Health

Time	ID	Title	Presenter
1225-1230	16	Nanosensor-Driven Detection of Psychophysiological Stress Markers for Real-Time Mental Health Monitoring	Jesse Nii Okai Amu-Darko
1230-1235	60	Mental health as a “security concern, ethical imperative, and wise investment”: A qualitative study exploring framings in global mental health	Amanda Low Pei Ting
1235-1240	61	Psychosocial Impacts of Surgical Complications on Surgeons: Evidence and Structural Modelling Considerations	Shadab Kalhoro
1240-1245	66	Governing Health, Neglecting Minds? A Policy Gap Analysis of Mental Health in Pandemic Governance	Li Anqi
1245-1250	107	Socioeconomic and Health Correlates of Mental Health Outcomes among Women with and Without HIV in Mozambique: Evidence from the 2022–23 Demographic and Health Survey	Nayantara Arora
1250-1255	120	Prevalence of Poor Sleep Quality Among Postgraduate Students: The Role of Socio-Demographic Characteristics and Social Media Habits	Shamini Devi Kumaran

Panel 3 - Non-Communicable Diseases

Time	ID	Title	Presenter
1225-1230	43	Unequal access, unequal outcomes: Disparities in availability and accessibility to self-injectable adrenaline for pediatric anaphylaxis in Asia Pacific	Phoebe Yau Ching Yan
1230-1235	78	Evaluating quality of life impact through vision improvement in resource-poor areas in East Africa	Caroline Dubois
1235-1240	108	Impact of Social Determinants of Health on Patient Outcomes of a Medical Mobile Clinic in the Philippines	Mark Joseph Balunsat
1240-1245	118	Turning Down Industrial Noise: A Collaborative Hearing Conservation Initiative For Palm Oil Mill Workers	Gowri A/P Mutthumanickam
1245-1250	143	From Wok to Wellness: Developing a Reliable Index to Measure Healthy Cooking in Malaysia	Prem Ananth Palaniappan
1250-1255	171	Identification and Development Of Potential Novel Compounds From Nigerian Medicinal Plants Against Non-Communicable Diseases	Abdulmumin Yunusa
1255-1300	223	Advancing Health Equity through Institutional Health Screening: A University-Based Approach to Metabolic Syndrome Prevention in Indonesia	Mutiara Tirta Prabandari Lintang Kusuma

Panel 4 - Global Health & Environment

Time	ID	Title	Presenter
1225-1230	31	Building Better Youth Programs Through Evidence: The YPAR-DMS Innovation	Cindy Grace Alejaga Guerbo
1230-1235	33	Larvicidal Activity of Annona squamosa (Atis) Leaves Extract on Aedes aegypti	Marisol S. Molina-Adorable
1235-1240	144	Development of continuing education programs for novice public health nurses who work on small islands	Maki (Strong) Chinen
1240-1245	155	Enhancing Sexuality Education to Prevent HIV Transmission among Filipino Young Key Populations: A Policy Analysis	Jayne Eunice U. Yang
1245-1250	185	Trends of ICD-10 Diagnosis at ED of Public Hospitals in Malaysia	Muhammad Khair bin Mohamad Yunus

Panel 5 - Climate Change & Health

Time	ID	Title	Presenter
1225-1230	13	Planetary Health and Food Sustainability in Africa: Opportunities, Challenges and Strategic	Pathway Shuaibu Saidu Musa
1230-1235	110	A Rapid Global Review of Climate Action Statements and Activities Across the Clinical Specialties	Mengieng Ung
1235-1240	116	Integrating Health and Ethics in Climate Adaptation: A Global Review of National Adaptation	Plans Muskaan Khepla
1240-1245	138	Carbon Quest: an educational gaming app to promote pro-environmental life choices	Yin May Tun
1245-1250	142	Sustainable Eye Care and Behavior Change in Health Professionals: Advancing Climate-Smart Ophthalmology in Asia and Beyond	Renzo Guinto

Session 2

30 October 2025 | 1030 - 1045 hrs

KPPI Gallery, Basement Level, Kompleks Pengurusan Penyelidikan dan Inovasi, Universiti Malaya

Panel 2 - Innovation and Technology in Urban Health

Time	ID	Title	Presenter
1035-1040	135	The cost-effectiveness of Artificial Intelligence-assisted Colonoscopy as a primary or secondary screening test in population-based colorectal cancer screening programme: a Markov modelling study	Wong Chi Sang
1040-1045	240	Community's Perspective on Implementing Health Kiosks in Low Urban Areas: A Mixed-Methods Study	Sandeep Charan Suri

Panel 3 - Non-Communicable Diseases & Metabolic Health

Time	ID	Title	Presenter
1030-1035	224	Progression of Metabolic Syndrome Among Initially Healthy University Workers in Indonesia: A Longitudinal Observation	Firsta Tiara Putriananda
1035-1040	231	Acceptability of medication for early vascular ageing (EVA) in Malaysia: A focus group study	Haridah binti Alias
1040-1045	255	Temporal Trends in the Triglyceride-Glucose Index Among Adults with Type 2 Diabetes in Malaysia: A Population-Based Analysis (2011-2019)	Shathanapriya

Panel 4 - Health Knowledge, Diagnostics, and Clinical Practice

Time	ID	Title	Presenter
1030-1035	194	Assessment of the Knowledge, Attitudes, and Practices (KAP) on Fascioliasis Among Farmers in Nueva Ecija	Nikko Gabriel D. Manipula
1035-1040	215	Relationship of 3Qs to the Clinical Decision-Making of Fourth-Year Student Nurses in a Private Higher Education Institution in Baguio City	Neil Cyrus Gian Bangtuan
1040-1045	241	Diagnostic Reliability of Adsorption Elution Technique in Detecting ABO Antigens in Saliva	Bianca Nicole L. Mendoza

Panel 5 - Planetary Health, Policy, and Practice

Time	ID	Title	Presenter
1030-1035	173	From Fieldwork to Policy Insight: Longitudinal Review of Environmental Health Practices in Gianyar, Bali (December 2021-June 2025)	Made Indra Wijaya
1035-1040	187	Governance at the Climate-Mental Health Interface: A Policy and Stakeholder Analysis in Singapore and the Philippines	Dominique Anne Suratos Aluquin
1040-1045	199	Implementing Planetary Health into the Nursing Curriculum: A multi-methods study protocol	Rubina Bogati

Session 3

30 October 2025 | 1215 - 1300 hrs

KPPI Gallery, Basement Level, Kompleks Pengurusan Penyelidikan dan Inovasi, Universiti Malaya

Panel 1 - Infectious Diseases / Universal Health Coverage

Time	ID	Title	Presenter
1215-1220	188	Predicting COVID-19 Mortality Risk Across SARS-CoV-2 Variants in Malaysia: A Three-Year Retrospective Study	Mohamad Nasri bin Mohamad Isa
1220-1225	192	A Quantitative Study of the Prevalence of Hepatitis B Among Garbage Collectors in Baguio City, Philippines	Sean Dale M. Manaloto
1225-1230	219	Assessing The Knowledge, Perception and Utilisation of Adolescents Towards Adolescent Friendly Health Services (AFHS) in Malaysia: Study Protocol	Natasya Nur bt Mohd Nasir
1230-1235	249	Determinant factors associated with antenatal care visit at Public Health Center in Padang City, Indonesia: a cross-sectional study	Husna Yetti
1235-1240	250	Study Protocol – Eco-Directed Sustainable Prescribing in Malaysia: Awareness, Attitudes and Opportunities for Primary Care Reform	Gursimran Kaur
1240-1245	269	Are People Living with Diabetes Using More Outpatient Healthcare? Insights from Malaysia	Devi Peramalah

Panel 2 - Mental Health & Wellbeing

Time	ID	Title	Presenter
1215-1220	198	Effects of physical versus online mindfulness breathing meditation intervention on state mindfulness and cognitive functions: A randomised controlled trial and mixed methods study	Hooi Ling Yut
1220-1225	214	Sacred Ageing: Exploring the Lived Experiences of Elderly Catholic Nuns	Marianne A. Formeloz
1225-1230	220	Insomnia in a Primary Care Setting: A Cross-Sectional Study of Prevalence and Associated Factors Among Adult Patients	Sapnaa Satthiyasilan
1230-1235	226	Voices of Wellness: Detecting Mental Health Risk Through Sound and Brainwaves	Farizah Mohd Hairi

Panel 3 - Migration, Vulnerability, and Global Health Equity

Time	ID	Title	Presenter
1215-1220	117	Well-Being and Retention of Imported Care Workers in Long-Term Care Facilities: A phenomenological inquiry	Choi Pin Pin Sandy
1220-1225	157	Social capital and social support as moderators in the association between perceived discrimination and mental health among Filipino domestic workers in Macao	Xiaoyu Duan
1225-1230	158	Understanding Students' Navigation of Health Spaces in Three Chinese Cities: A Qualitative and Network Survey Study	Mohamed Yunus Rafiq
1230-1235	169	Exploring Health and Well-Being Among Refugee and Migrant Women in Greece: A Mixed-Methods Study with Women and Key Informants	Kirandeep Kaur Chhokar
1235-1240	243	Climate Change and Chronic Kidney Disease (CKD) for Migrant Workers	Lynn Tang

Panel 4 - Occupational Health

Time	ID	Title	Presenter
1215-1220	164	Occupational Dust-Related Diseases and Policy Responses: Taiwan's Recent Experience	Wei, Yi-Ping
1220-1225	165	Occupational Safety and Health Protections for Long-term Care Workers in Taiwan: Literature Review and Exploration of Future	Tseng, I-Hsuan
1225-1230	176	Improving Compensation Systems for Medical Trainees: A Health Workforce Policy Model from Korea	Yula Nam
1230-1235	213	Management of open fractures in Sri Lanka using AEFix: A frugal innovation approach to improve trauma care equity	Sivananthan Sashikaran
1235-1240	242	Maximising Nursing Leadership in Achieving Global Health Goals in the Western Pacific Region	Aprille C. Banayat
1240-1245	73	Prevalence, Associated Factors, And Consequences Of Workplace Bullying Among House Officers In Malaysia: A Structural Equation Modelling Approach	Siti Syawaanatul Zahraa

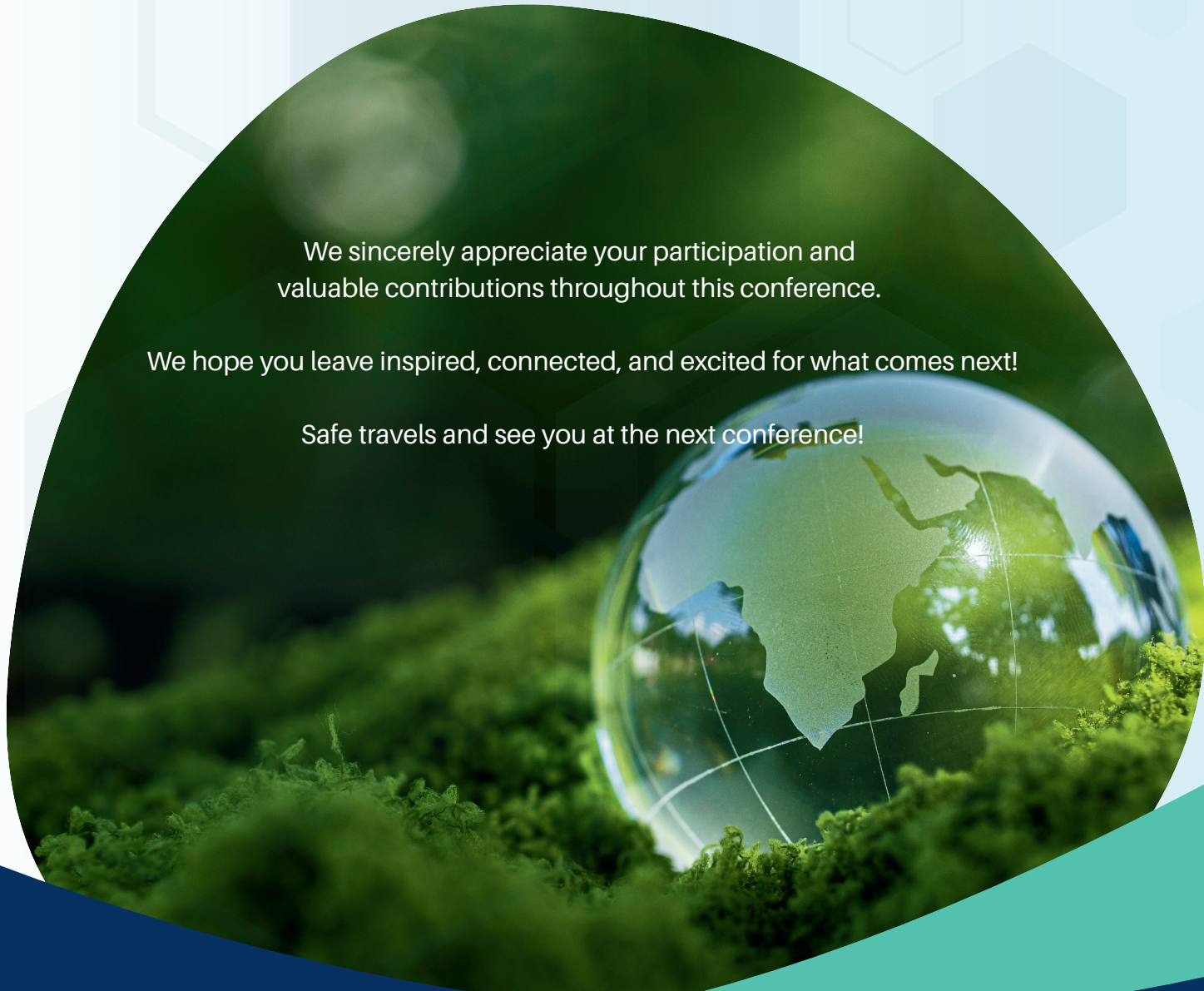
Panel 5 - Infectious Diseases, Environment, and Health Equity

Time	ID	Title	Presenter
1215-1220	90	Pandemic Vulnerability Among Indigenous Populations in Malaysia: A Scoping Review of Structural Inequities and Public Health Response	Norhasliza Abu Bakar
1220-1225	259	Water Flow Direction and Spatial Distribution of Schistosoma Cercariae in Peripheral Water Sites Around Naujan Lake, Oriental Mindoro: A Retrospective Study	Gabrielle Andrea M. Genuino
1225-1230	106	Antibiotic Resistance Pattern of Escherichia coli from Selected Water Sources: A Preliminary Study in Upper	Sitio Pintor, Rodriguez, Rizal Christine Jade M. Del Rosario
1230-1235	149	Critical Analysis on the Impact of Algorithm-Driven Nutrition Content on Global Youth Health and Wellness	Elijah Wen
1235-1240	131	Enhancing Ethical Safeguards in Paediatric Oral Health Research: Promoting Health Equity through Transparent Reporting in Malaysian Publications - A Scoping Review	Tengku Nurfarhana Nadirah Tengku Hamzah

We sincerely appreciate your participation and valuable contributions throughout this conference.

We hope you leave inspired, connected, and excited for what comes next!

Safe travels and see you at the next conference!





APRU GHC 2026 Host Announcement



香港中文大學
The Chinese University of Hong Kong



香港中文大學
醫藥學公共衛生及基層醫療學院
School of Public Health and Primary Care
The Chinese University of Hong Kong

學術交流處
Office of Academic Links



APRU Global Health Conference 2026


HONG KONG

7-9 December 2026

The Chinese University of Hong Kong



*Resilience and Adaptation :
Navigating the Evolving Landscape
of Global Health in a Changing World*

 aprughc2026@cuhk.edu.hk

 <https://cuhk.aprughc2026.hk>



aprughc2026@cuhk.edu.hk



[APRU Global Health Conference 2026 | Hong Kong](https://cuhk.aprughc2026.hk)



APRU Global Health Conference 2025

Towards Planetary Health Equity: A Global Call for Shared Solutions



APRU Global Health Conference 2025

Department of Social and Preventive Medicine
Level 5, Block I, Faculty of Medicine, Universiti Malaya
50603 Kuala Lumpur, Malaysia.

Contact: +603-7967 3797 | aprughc@um.edu.my

More information: aprughc2025.um.edu.my

